

An aerial view of the Dubai skyline at dusk. The sky is a mix of soft orange and deep blue. In the center, two tall, dark glass skyscrapers stand prominently. To the left, the Burj Khalifa is visible in the distance. To the right, a large, uniquely shaped building with a spherical top is illuminated. A complex network of multi-level highways with cars is visible in the foreground and middle ground. The overall scene is a vibrant cityscape.

One & Only

ONE ZA'ABEEL

Dubai



GROUND FLOOR - Meeting Rooms

Discovery
Orlay
Zenith A & B
Synergy
Vision

kerzner®

FIRST FLOOR - Ballrooms

Solar Grand Ballroom Stellar Junior Ballroom

One&Only

ONE ZA'ABEEL - DUBAI



Technical Specifications

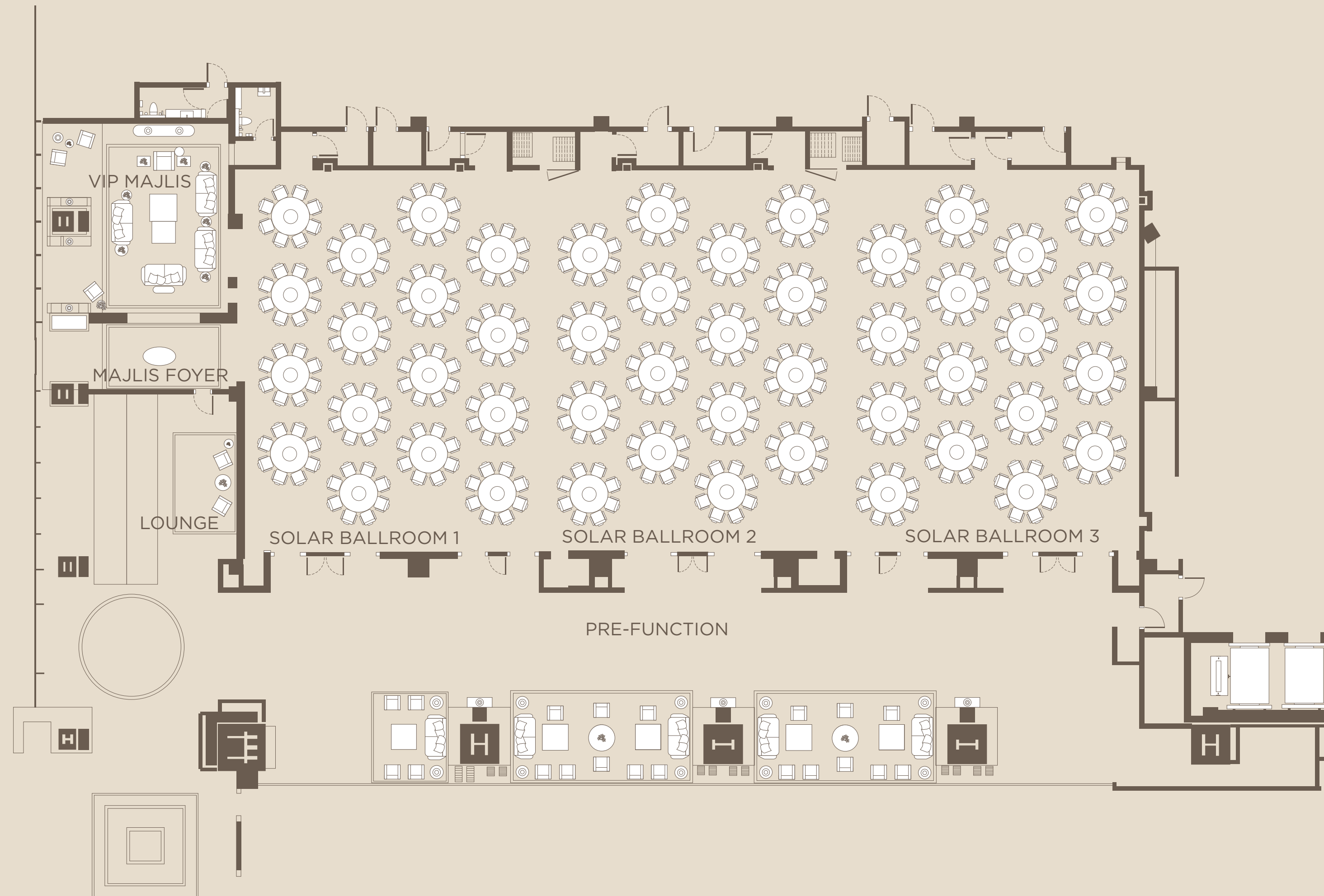
Name	Ceiling Height	Dimensions (LxW)	Area (sqm)	Capacity by setup	TV Screen Size
Discovery	4m	8.9m x 5.6m	50	11 - Boardroom	LG Model 86TR3BF 86 Inches Display
Orlay	4m	8.9m x 5.6m	50	11 - Boardroom	
Zenith A+B	4m	8m x 16.3m	130	32 - Hollow Square	
Zenith A	4m	8m x 8.5m	68	16 - U Shape	
Zenith B	4m	8m x 7.8m	62	16 - U Shape	
Synergy	4m	10m x 5.8m	58	20 - 5 Round Tables	
Vision	4m	10m x 5.8m	58	19 - Boardroom	

Name	Ceiling Height	Dimensions (LxW)	Area (sqm)	Capacity by setup	LED Wall Dimensions
Solar Ballroom	9.2m	44m x 18.7m	822	480 - Round Tables	
Solar 1	9.2m	14.66m x 18.7m	274	160 - Round Tables	5m x 3m
Solar 2	9.2m	14.66m x 18.7m	270	160 - Round Tables	
Solar 3	9.2m	14.66m x 18.7m	267	160 - Round Tables	10m x 5m
Solar Majlis	9.2m	9.3m x 7.2m	67	13 - Majlis	
Stellar Ballroom	4.3m	15.5m x 24.7m	382	220 - Round Tables	
Stellar 1	4.3m	15.5m x 11.8m	182	100 - Round Tables	4.5m x 2.5m
Stellar 2	4.3m	15.5m x 12.9m	200	120 - Round Tables	4.5m x 2.5m

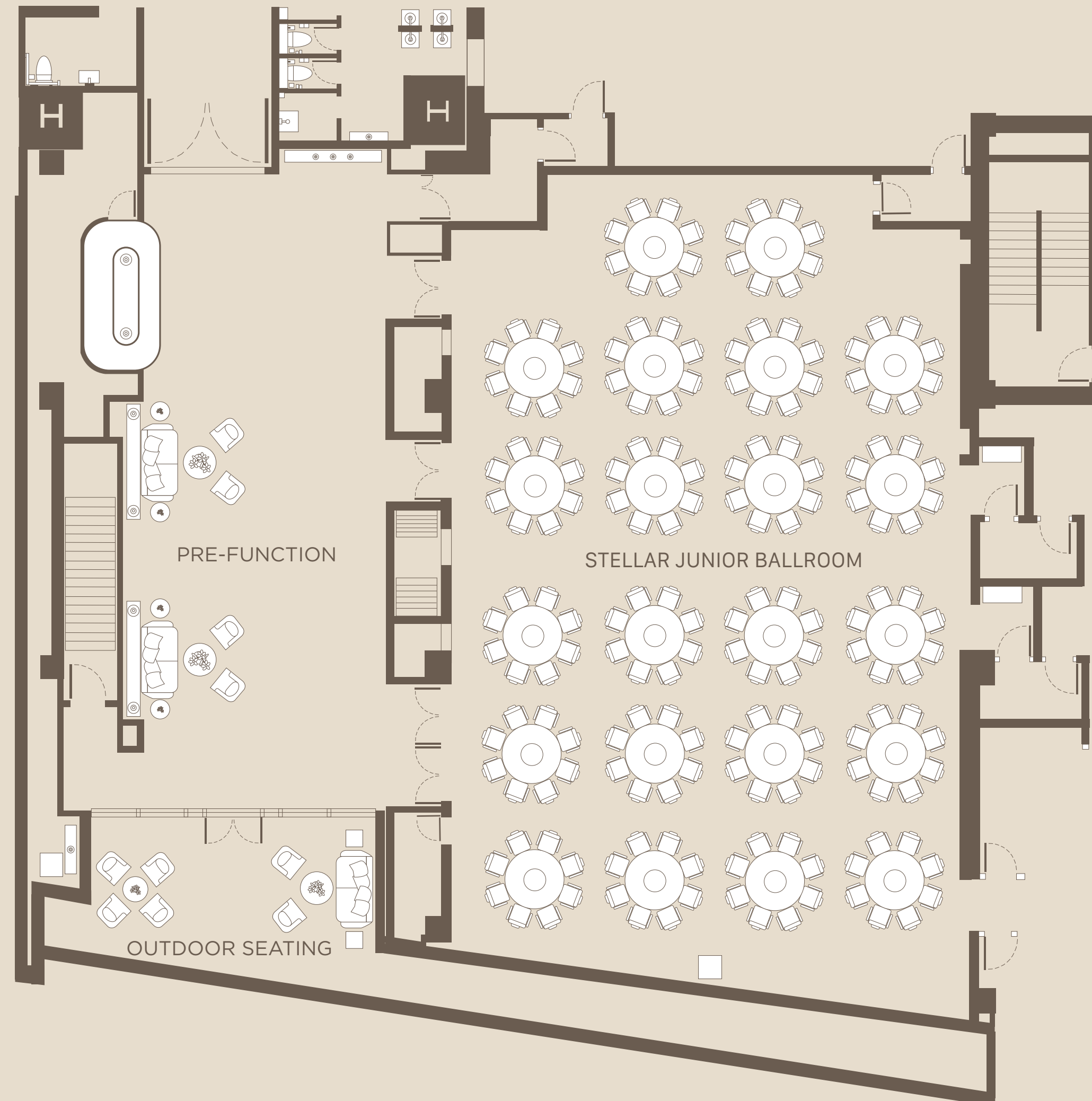
Ground Floor - Meeting Rooms Floor Plan



First Floor - Solar Ballroom Floor Plan



First Floor - Stellar Ballroom Floor Plan



One & Only

ONE ZA'ABEEL

Dubai

THANK YOU