

NOTE:-

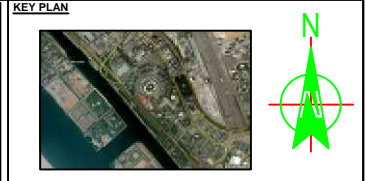
1. ALL DIMENSIONS ARE IN MILLIMETERS UNLESS OTHERWISE SPECIFIED.
2. ALL ELECTRICAL ACCESSORY IN EXTERNAL & WET AREA SHALL BE W/P AND OTHER AREA SHALL BE PVC WHITE.
3. ALL SWITCHES/THERMOSTATS NEAR THE DOOR SHALL BE 200mm FROM THE EDGE OF THE WALL.
4. ELECTRICAL INSTALLATION WILL BE CARRIED OUT AS PER ADD REGULATION EXPANSION COUPLER PROVIDED WHERE EVER CONDUITS CROSSING THE EXPANSION JOINT.
5. ALL FALSE CEILING MOUNTED LIGHT FIXTURES ARE CONNECTED WITH CEILING ROSE USING HEAT RESISTANT WIRE.
6. ALL PVC CONDUIT USED SHALL BE HEAVY DUTY.
7. SEPARATE DRAWING SHALL BE SUBMITTED FOR LANDSCAPE LIGHTING.

LEGEND

SYMBOL	DESCRIPTION	LOCATING INDICATOR (Y/F)
	SINGLE SWITCHED SOCKET OUTLET	400mm
	TWIN SWITCHED SOCKET OUTLET (FED FROM HIGH-CAPACITY SUPPLY)	400mm
	1/3A SINGLE SWITCHED SOCKET OUTLET (CLEANER'S USE)	400mm
	1/3A SWITCHED FUSED CONNECTION UNIT WITH INDICATOR LAMP	400mm
	FLEX OUTLET PLATE	ADJACENT TO EQUIPMENT
	DOUBLE POLE WALL SWITCH	1300mm
	TRIPLE POLE & NEUTRAL ISOLATOR	ADJACENT TO EQUIPMENT
	SINGLE POLE & NEUTRAL ISOLATOR	ADJACENT TO EQUIPMENT
	INDUSTRIAL SWITCHED SINGLE PHASE SOCKET OUTLET EN 60309-2	ADJACENT TO EQUIPMENT
	INDUSTRIAL SWITCHED THREE PHASE SOCKET OUTLET EN 60309-2	ADJACENT TO EQUIPMENT
	1/3A SWITCHED FUSED CONNECTION UNIT WITH INDICATOR LAMP	ADJACENT TO EQUIPMENT
	FLOOR MOUNTING	AS SHOWN ON DRC.
	HAND DRYER OUTLET	ADJACENT TO EQUIPMENT
	SHOWER OUTLET	ADJACENT TO EQUIPMENT
	WATER HEATER OUTLET	ADJACENT TO EQUIPMENT
	WASHER DRYER OUTLET	ADJACENT TO EQUIPMENT
	HAIR DRYER OUTLET	ADJACENT TO EQUIPMENT
	SINGLE OR THREE PHASE DISTRIBUTION BOARD (SURFACE)	1800mm (TOP)
	SUB MAIN DISTRIBUTION BOARD	1800mm (TOP)
	MOTOR CONTROL CENTER	1800mm (TOP)
	LIGHTING CONTROL PANEL	1800mm (TOP)
	3 COMPARTMENT FLOOR OUTLET BOX WITH 1x1/3A SOCKET WITH SPACE FOR 4mm RAS OUTLETS.	FLOOR MOUNTING
	2 COMPARTMENT FLOOR OUTLET BOX WITH 1x1/3A SOCKET WITH SPACE FOR 4mm RAS OUTLETS.	FLOOR MOUNTING
	GI TRUNKING FOR LIGHTING	AS SHOWN ON DRC.
	GI TRUNKING FOR SMALL POWER	AS SHOWN ON DRC.
	GI TRUNKING FOR ELV SYSTEM	AS SHOWN ON DRC.
	POWER CABLE TRAY	AS SHOWN ON DRC.

ABBREVIATIONS

TYP.	TYPICAL	1/A	TO ABOVE
W/P	WEATHER PROOF	1/B	TO BELOW
H/L	HIGH LEVEL	F/A	FROM ABOVE
L/L	LOW LEVEL	F/B	FROM BELOW
R/L	REACH LEVEL		



CONSULTANT'S DRAWING REFERENCE :-

Drawing No.	Rev.	Drawing Title
AR-1200(ASB)	0	LEVEL 02 KEY PLAN (+4.00)
E-1101	0	LEVEL 02 SMALL POWER LAYOUT (LOW LEVEL)
E-1104	0	LEVEL 02 SMALL POWER LAYOUT (HIGH LEVEL)

DATE: 15.02.2014
REV: 0
DRAWN: SUSHANT
ISSUE DETAILS: AS BUILT

PROJECT: FGB MULTIFUNCTIONAL ARENA

CLIENT: REEM INVESTMENTS

PROJECT MANAGEMENT: IFS

MAIN CONTRACTOR: Max Bagg Emirates Building Contracting LLC

LEAD CONSULTANT: OBERMEYER MIDDLE EAST GmbH ABU DHABI BRANCH

ARCHITECTURE DESIGN CONSULTANT: architektur concept Pfaffhausen + Staudte

MEP CONSULTANT: darwa alsharhin Consulting Engineers

MEP CONTRACTOR: TRINITY ENGINEERING SERVICES LLC MECH-ELECTRICAL & PLUMBING

AS - BUILT

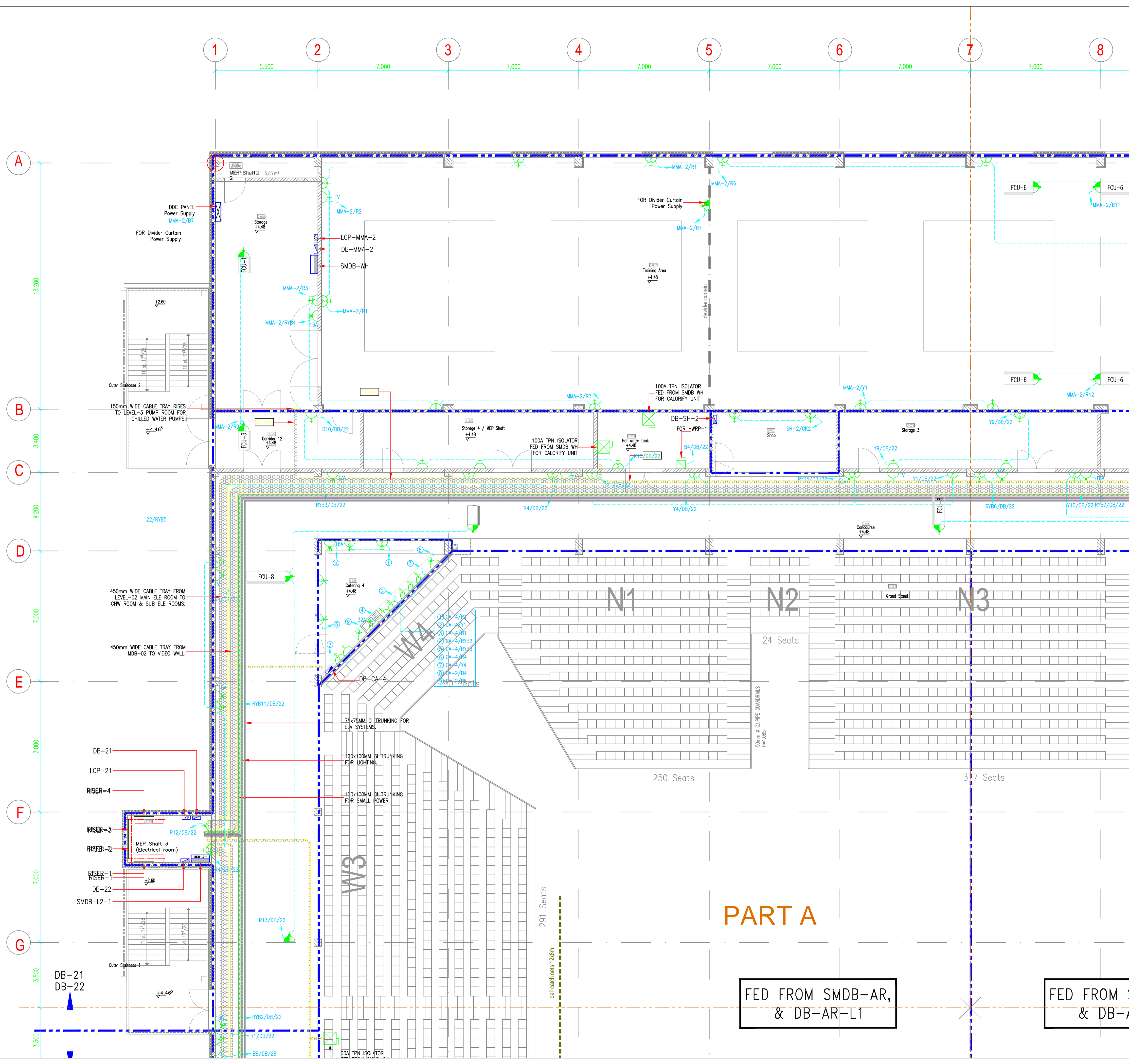
APPROVAL STATUS

A	APPROVED
B	APPROVED AS NOTED
C	RE SUBMIT

TITLE: LEVEL 02 POWER LAYOUT (MAIN PLAN)

PROJECT NO.	DATE	DRAWN	CHECKED	SCALE	FORMAT
AD-1010	15.02.2014	SUSHANT	ANANT	1:200	A 1

DRAWING NO. MA TES AB PW 2 0 2 3 0 0



NOTE:-

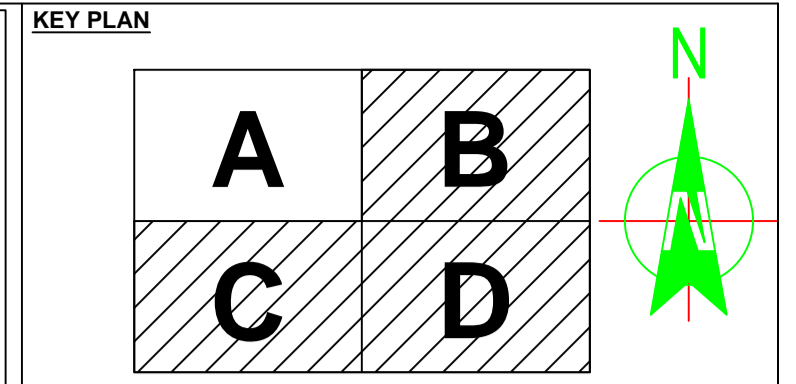
1. ALL DIMENSIONS ARE IN MILLIMETERS UNLESS OTHERWISE SPECIFIED.
2. ALL ELECTRICAL ACCESSORY IN EXTERNAL & WET AREA SHALL BE W/P AND OTHER AREA SHALL BE PVC WHITE.
3. ALL SWITCHES/THERMOSTATS NEAR THE DOOR SHALL BE 200mm FROM THE EDGE OF THE WALL.
4. ELECTRICAL INSTALLATION WILL BE CARRIED OUT AS PER ADDC REGULATION EXPANSION COULDER PROVIDED WHERE EVER CONDUITS CROSSING THE EXPANSION JOINT.
5. ALL FALSE CEILING MOUNTED LIGHT FIXTURES ARE CONNECTED WITH CEILING ROSE USING HEAT RESISTANT WIRE.
6. ALL PVC CONDUIT USED SHALL BE HEAVY DUTY.
7. SEPARATE DRAWING SHALL BE SUBMITTED FOR LANDSCAPE LIGHTING.

LEGEND

SYMBOL	DESCRIPTION	MOUNTING HEIGHT (PFL)
[Symbol]	SINGLE SWITCHED SOCKET OUTLET	400mm
[Symbol]	TWIN SWITCHED SOCKET OUTLET (FED FROM NON-ESSENTIAL SUPPLY)	400mm
[Symbol]	13A SINGLE SWITCHED SOCKET OUTLET (CLEANER'S USE)	400mm
[Symbol]	13A SWITCHED FUSED CONNECTION UNIT WITH INDICATOR LAMP	400mm
[Symbol]	FLEX OUTLET PLATE	ADJACENT TO EQUIPMENT
[Symbol]	AS ABOVE - SHADING INDICATES ABOVE CEILING	ABOVE FALSE CEILING
[Symbol]	DOUBLE POLE WALL SWITCH	1300mm
[Symbol]	TRIPLE POLE & NEUTRAL ISOLATOR	ADJACENT TO EQUIPMENT
[Symbol]	SINGLE POLE & NEUTRAL ISOLATOR	ADJACENT TO EQUIPMENT
[Symbol]	INDUSTRIAL SWITCHED SINGLE PHASE SOCKET OUTLET AS EN 60309-2	ADJACENT TO EQUIPMENT
[Symbol]	INDUSTRIAL SWITCHED THREE PHASE SOCKET OUTLET AS EN 60309-2	ADJACENT TO EQUIPMENT
[Symbol]	13A SWITCHED FUSED CONNECTION UNIT WITH INDICATOR LAMP	ADJACENT TO EQUIPMENT
[Symbol]	AS ABOVE SHADING INDICATES WITHIN CEILING VOID	FLOOR MOUNTING
[Symbol]	HAND DRYER OUTLET	ADJACENT TO EQUIPMENT
[Symbol]	SHOWER OUTLET	ADJACENT TO EQUIPMENT
[Symbol]	WATER HEATER OUTLET	ADJACENT TO EQUIPMENT
[Symbol]	WASHER DRYER OUTLET	ADJACENT TO EQUIPMENT
[Symbol]	HAIR DRYER OUTLET	ADJACENT TO EQUIPMENT
[Symbol]	SINGLE OR THREE PHASE DISTRIBUTION BOARD (TOP)	1800mm (TOP)
[Symbol]	SUB MAIN DISTRIBUTION DISTRIBUTION BOARD	1800mm (TOP)
[Symbol]	MOTOR CONTROL CENTER	1800mm (TOP)
[Symbol]	LIGHTING CONTROL PANEL	
[Symbol]	3 COMPARTMENT FLOOR OUTLET BOX WITH 1x13A SOCKET WITH SPACE FOR 4nos RJ45 OUTLETS	FLOOR MOUNTING
[Symbol]	3 COMPARTMENT FLOOR OUTLET BOX WITH 1x13A TWIN SOCKET WITH SPACE FOR 4nos RJ45 OUTLETS	FLOOR MOUNTING
[Symbol]	GI TRUNKING FOR LIGHTING	AS SHOWN ON DRG.
[Symbol]	GI TRUNKING FOR SMALL POWER	AS SHOWN ON DRG.
[Symbol]	GI TRUNKING FOR ELV SYSTEM	AS SHOWN ON DRG.
[Symbol]	POWER CABLE TRAY	AS SHOWN ON DRG.

ABBREVIATIONS

TYP.	TYPICAL	1/A	TO ABOVE
W/P	WEATHER PROOF	1/B	TO BELOW
H/L	HIGH LEVEL	F/A	FROM ABOVE
L/L	LOW LEVEL	F/B	FROM BELOW
B/L	BENCH LEVEL		



CONSULTANT'S DRAWING REFERENCE :-

Drawing No.	Rev.	Drawing Title
AR-1200(ASB)	0	LEVEL 02 KEY PLAN (+4.48)
E-1101	0	LEVEL 02 SMALL POWER LAYOUT (LOW LEVEL)
E-1104	0	LEVEL 02 SMALL POWER LAYOUT (HIGH LEVEL)

DATE	REV.	DRAWN	ISSUE DETAILS
15.02.2014	0	SUSHANT	AS BUILT

PROJECT: FGB MULTIFUNCTIONAL ARENA

CLIENT: ريم الإستثمار REEM INVESTMENTS

PROJECT MANAGEMENT: IFS INSTITUT FÜR SPORTSTÄTTEN-BERATUNG GMBH

MAIN CONTRACTOR: Max Bögl Emirates Building Contracting LLC
P.O. Box 19266, Dubai, UAE
Tel: +971 4 3844444
Fax: +971 4 3844445
P.O. Box 52724, Abu Dhabi, UAE
Tel: +971 2 4661744
Fax: +971 2 4661745

LEAD CONSULTANT: OBERMEYER MIDDLE EAST GmbH ABU DHABI BRANCH

ARCHITECTURE DESIGN CONSULTANT: architektur concept Pfaffhausen + Staudte

MEP CONSULTANT: clarke samadhin Consulting Engineers

MEP CONTRACTOR: trinity TRINITY ENGINEERING SERVICES LLC MECH-ELECTRICAL & PLUMBING
P. O. BOX 62404, ABU DHABI, UAE
TEL. 04 3386070 FAX 04 3386238

AS - BUILT

APPROVAL STATUS

Section	Status
A	APPROVED
B	APPROVED AS NOTED
C	RE SUBMIT

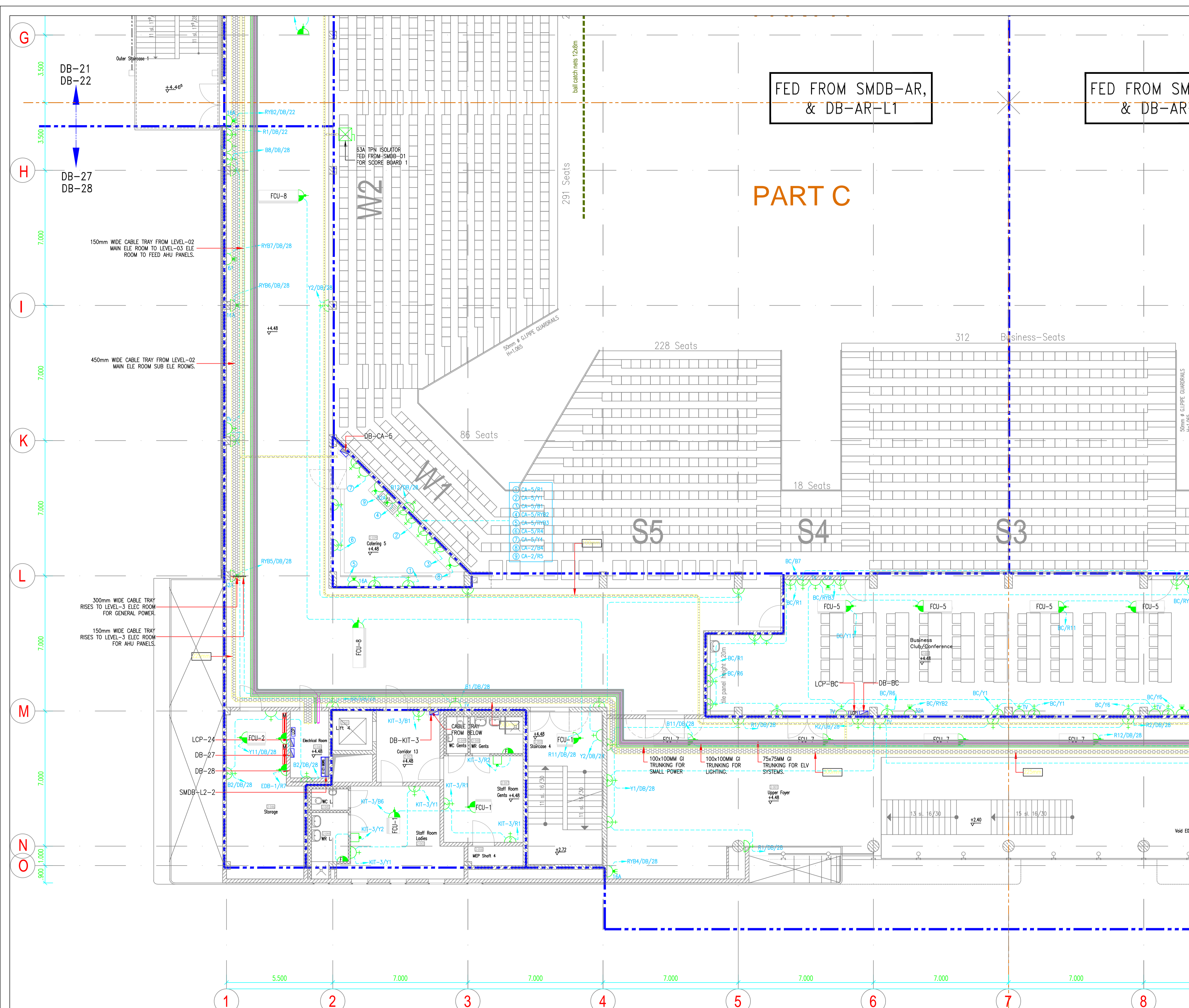
TITLE: LEVEL 02 POWER LAYOUT (PART-A)

PROJECT NO.	DATE	DRAWN	CHECKED	ANANT	SCALE	FORMAT
AD-1010	15.02.2014	SUSHANT	ANANT		1:100	A 1
DRAWING NO.						
MA	TES	AB	PW	2	0	2
				3	0	0

PART A

FED FROM SMDB-AR, & DB-AR-L1

FED FROM S & DB-A



FED FROM SMDB-AR,
& DB-AR-L1

FED FROM SMDB-AR,
& DB-AR-L1

PART C

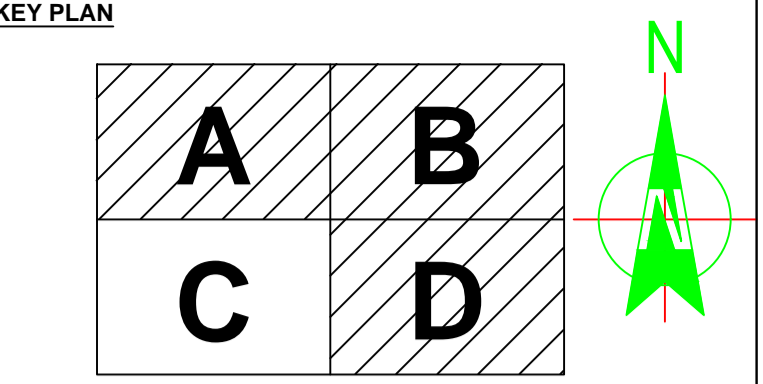
- NOTE:-**
1. ALL DIMENSIONS ARE IN MILLIMETERS UNLESS OTHERWISE SPECIFIED.
 2. ALL ELECTRICAL ACCESSORY IN EXTERNAL & WET AREA SHALL BE W/P AND OTHER AREA SHALL BE PVC WHITE.
 3. ALL SWITCHES/THERMOSTATS NEAR THE DOOR SHALL BE 200mm FROM THE EDGE OF THE WALL.
 4. ELECTRICAL INSTALLATION WILL BE CARRIED OUT AS PER ADDC REGULATION.
 5. EXPANSION COUPLER PROVIDED WHERE EVER CONDUITS CROSSING THE EXPANSION JOINT.
 6. ALL FALSE CEILING MOUNTED LIGHT FIXTURES ARE CONNECTED WITH CEILING ROSE USING HEAT RESISTANT WIRE.
 7. ALL PVC CONDUIT USED SHALL BE HEAVY DUTY.
 8. SEPARATE DRAWING SHALL BE SUBMITTED FOR LANDSCAPE LIGHTING.

LEGEND

SYMBOL	DESCRIPTION	MOUNTING HEIGHT(FFL)
[Symbol]	SINGLE SWITCHED SOCKET OUTLET	400mm
[Symbol]	TWIN SWITCHED SOCKET OUTLET (FED FROM NON-ESSENTIAL SUPPLY)	400mm
[Symbol]	1.3A SWITCHED SOCKET OUTLET (CLEANER'S USE)	400mm
[Symbol]	1.3A SWITCHED FUSED CONNECTION UNIT WITH INDICATOR LAMP	400mm
[Symbol]	FLEX OUTLET PLATE	ADJACENT TO EQUIPMT ABOVE FALSE CEILING
[Symbol]	AS ABOVE - SHADING INDICATES ABOVE CEILING	ADJACENT TO EQUIPMT ABOVE FALSE CEILING
[Symbol]	DOUBLE POLE WALL SWITCH	1300mm
[Symbol]	TRIPLE POLE & NEUTRAL ISOLATOR	ADJACENT TO EQUIPMT
[Symbol]	SINGLE POLE & NEUTRAL ISOLATOR	ADJACENT TO EQUIPMT
[Symbol]	INDUSTRIAL SWITCHED SINGLE PHASE SOCKET OUTLET BS EN 60309-2	ADJACENT TO EQUIPMT
[Symbol]	INDUSTRIAL SWITCHED THREE PHASE SOCKET OUTLET BS EN 60309-2	ADJACENT TO EQUIPMT
[Symbol]	1.3A SWITCHED FUSED CONNECTION UNIT WITH INDICATOR LAMP	ADJACENT TO EQUIPMT
[Symbol]	AS ABOVE SHADING INDICATES WITHIN CEILING VOID	FLOOR MOUNTING
[Symbol]	HAND DRYER OUTLET	ADJACENT TO EQUIPMT
[Symbol]	SHOWER OUTLET	ADJACENT TO EQUIPMT
[Symbol]	WATER HEATER OUTLET	ADJACENT TO EQUIPMT
[Symbol]	WASHER DRYER OUTLET	ADJACENT TO EQUIPMT
[Symbol]	HAIR DRYER OUTLET	ADJACENT TO EQUIPMT
[Symbol]	SINGLE OR THREE PHASE DISTRIBUTION BOARD (SURFACE)	1800mm (TOP)
[Symbol]	SUB MAIN DISTRIBUTION BOARD	1800mm (TOP)
[Symbol]	MOTOR CONTROL CENTER	1800mm (TOP)
[Symbol]	LIGHTING CONTROL PANEL	FLOOR MOUNTING
[Symbol]	3 COMPARTMENT FLOOR OUTLET BOX WITH 1x1.3A SOCKET WITH SPACE FOR 4nos RJ45 OUTLETS.	FLOOR MOUNTING
[Symbol]	3 COMPARTMENT FLOOR OUTLET BOX WITH 1x1.3A TWIN SOCKET WITH SPACE FOR 4nos RJ45 OUTLETS.	FLOOR MOUNTING
[Symbol]	GI TRUNKING FOR LIGHTING	AS SHOWN ON DRG.
[Symbol]	GI TRUNKING FOR SMALL POWER	AS SHOWN ON DRG.
[Symbol]	GI TRUNKING FOR ELV SYSTEM	AS SHOWN ON DRG.
[Symbol]	POWER CABLE TRAY	AS SHOWN ON DRG.

ABBREVIATIONS

TYP.	TYPICAL	T/A	TO ABOVE
W/P	WEATHER PROOF	T/B	TO BELOW
H/L	HIGH LEVEL	F/A	FROM ABOVE
L/L	LOW LEVEL	F/B	FROM BELOW
B/L	BENCH LEVEL		



CONSULTANT'S DRAWING REFERENCE :-

Drawing No.	Rev.	Drawing Title
AR-1200(ASB)	0	LEVEL 02 KEY PLAN (+4.48)
E-1101	0	LEVEL 02 SMALL POWER LAYOUT (LOW LEVEL)
E-1104	0	LEVEL 02 SMALL POWER LAYOUT (HIGH LEVEL)

DATE **REV.** **DRAWN** **ISSUE DETAILS**

DATE	REV.	DRAWN	ISSUE DETAILS
15.02.2014	0	SUSHANT	AS BUILT

PROJECT: FGB MULTIFUNCTIONAL ARENA

CLIENT: ريم للاستثمار REEM INVESTMENTS

PROJECT MANAGEMENT: IFS INSTITUT FÜR SPORTSTÄTTEN-HERSTELLUNG GMBH

MAIN CONTRACTOR: Max Bögl Emirates Building Contracting LLC
 Max Bögl Middle East GmbH
 P.O. Box 22275, Abu Dhabi, UAE
 Tel: +971 2 4661441
 Fax: +971 2 4661442

LEAD CONSULTANT: OBERMEYER MIDDLE EAST GmbH
 ABU DHABI BRANCH

ARCHITECTURE DESIGN CONSULTANT: architektur concept
 Pfaffhausen + Stadler

MEP CONSULTANT: clarke samadhin
 Consulting Engineers

MEP CONTRACTOR: trinity TRINITY ENGINEERING SERVICES LLC
 MECH-ELECTRICAL & PLUMBING
 P. O. BOX 82404, ABU DHABI, UAE
 TEL. 04 3386270 FAX 04 3386238

AS - BUILT

APPROVAL STATUS

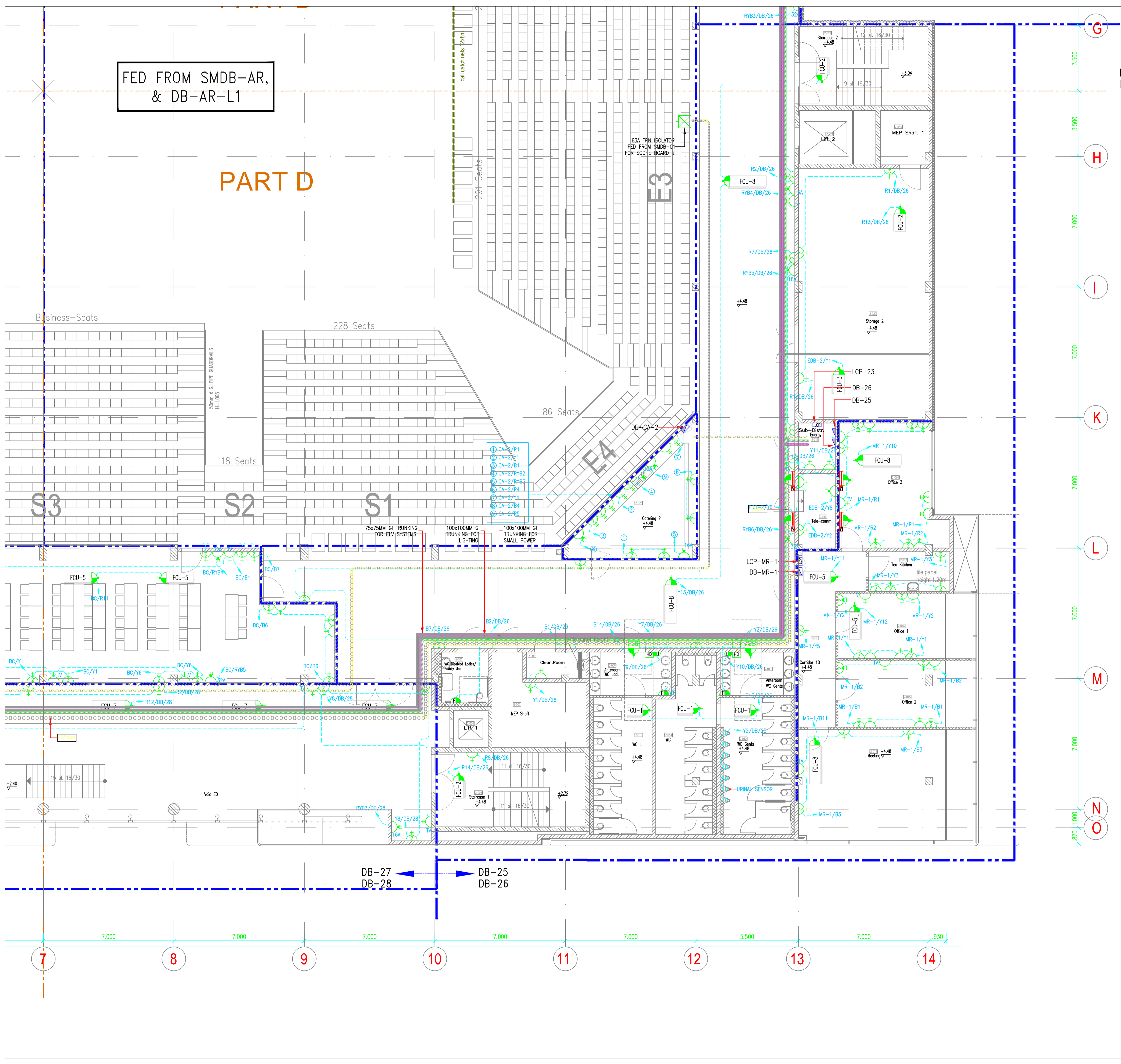
APPROVAL	STATUS
A	APPROVED
B	APPROVED AS NOTED
C	RE SUBMIT

TITLE: LEVEL 02 POWER LAYOUT (PART-C)

PROJECT NO.	DATE	DRAWN	CHECKED	SCALE	FORMAT
AD-1010	15.02.2014	SUSHANT	ANANT	1:100	A 1

DRAWING NO. **REV.NO**

MA	TES	AB	PW	2	0	2	3	0	0
----	-----	----	----	---	---	---	---	---	---



FED FROM SMDB-AR,
& DB-AR-L1

PART D

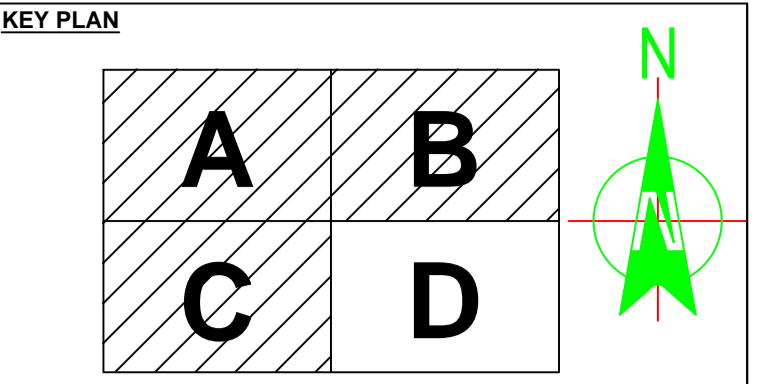
- NOTE:-**
1. ALL DIMENSIONS ARE IN MILLIMETERS UNLESS OTHERWISE SPECIFIED.
 2. ALL ELECTRICAL ACCESSORY IN EXTERNAL & WET AREA SHALL BE W/P AND OTHER AREA SHALL BE PVC WHITE.
 3. ALL SWITCHES/THERMOSTATS NEAR THE DOOR SHALL BE 200mm FROM THE EDGE OF THE WALL.
 4. ELECTRICAL INSTALLATION WILL BE CARRIED OUT AS PER ADDC REGULATION.
 5. EXPANSION COOLER PROVIDED WHERE EVER CONDUITS CROSSING THE EXPANSION JOINT.
 6. ALL FALSE CEILING MOUNTED LIGHT FIXTURES ARE CONNECTED WITH CEILING ROSE USING HEAT RESISTANT WIRE.
 7. ALL PVC CONDUIT USED SHALL BE HEAVY DUTY.
 8. SEPARATE DRAWING SHALL BE SUBMITTED FOR LANDSCAPE LIGHTING.

LEGEND

SYMBOL	DESCRIPTION	MOUNTING HEIGHT(PPL)
[Symbol]	SINGLE SWITCHED SOCKET OUTLET	400mm
[Symbol]	TWIN SWITCHED SOCKET OUTLET (FED FROM NON-ESSENTIAL SUPPLY)	400mm
[Symbol]	1.5A SINGLE SWITCHED SOCKET OUTLET (CLEANER'S USE)	400mm
[Symbol]	1.5A SWITCHED FUSED CONNECTION UNIT WITH INDICATOR LAMP	400mm
[Symbol]	FLEX OUTLET PLATE	ADJACENT TO EQUIPMENT
[Symbol]	AS ABOVE - SHADING INDICATES ABOVE CEILING	ABOVE FALSE CEILING
[Symbol]	DOUBLE POLE WALL SWITCH	1300mm
[Symbol]	TRIPLE POLE & NEUTRAL ISOLATOR	ADJACENT TO EQUIPMENT
[Symbol]	SINGLE POLE & NEUTRAL ISOLATOR	ADJACENT TO EQUIPMENT
[Symbol]	INDUSTRIAL SWITCHED SINGLE PHASE SOCKET OUTLETS EN 60309-2	ADJACENT TO EQUIPMENT
[Symbol]	INDUSTRIAL SWITCHED THREE PHASE SOCKET OUTLETS EN 60309-2	ADJACENT TO EQUIPMENT
[Symbol]	1.5A SWITCHED FUSED CONNECTION UNIT WITH INDICATOR LAMP	ADJACENT TO EQUIPMENT
[Symbol]	AS ABOVE SHADING INDICATES WITHIN CEILING VOID	FLOOR MOUNTING
[Symbol]	HAND DRYER OUTLET	ADJACENT TO EQUIPMENT
[Symbol]	SHOWER OUTLET	ADJACENT TO EQUIPMENT
[Symbol]	WATER HEATER OUTLET	ADJACENT TO EQUIPMENT
[Symbol]	WASHER DRYER OUTLET	ADJACENT TO EQUIPMENT
[Symbol]	HAIR DRYER OUTLET	ADJACENT TO EQUIPMENT
[Symbol]	SINGLE OR THREE PHASE DISTRIBUTION BOARD (TOP)	1800mm (TOP)
[Symbol]	SUB MAIN DISTRIBUTION BOARD	1800mm (TOP)
[Symbol]	MOTOR CONTROL CENTER	1800mm (TOP)
[Symbol]	LIGHTING CONTROL PANEL	
[Symbol]	3 COMPARTMENT FLOOR OUTLET BOX WITH 1x1.5A SOCKET WITH SPACE FOR 4nos RJ45 OUTLETS.	FLOOR MOUNTING
[Symbol]	3 COMPARTMENT FLOOR OUTLET BOX WITH 1x1.5A TWIN SOCKET WITH SPACE FOR 4nos RJ45 OUTLETS.	FLOOR MOUNTING
[Symbol]	GI TRUNKING FOR LIGHTING	AS SHOWN ON DRG.
[Symbol]	GI TRUNKING FOR SMALL POWER	AS SHOWN ON DRG.
[Symbol]	GI TRUNKING FOR ELV SYSTEM	AS SHOWN ON DRG.
[Symbol]	POWER CABLE TRAY	AS SHOWN ON DRG.

ABBREVIATIONS

TYP:	TYPICAL	1/A	10 ABOVE
W/P:	WEATHER PROOF	1/B	TO BELOW
H/L:	HIGH LEVEL	F/A	FROM ABOVE
L/L:	LOW LEVEL	F/B	FROM BELOW
B/L:	BENCH LEVEL		



CONSULTANT'S DRAWING REFERENCE :-

Drawing No.	Rev.	Drawing Title
AR-1200(ASB)	0	LEVEL 02 KEY PLAN (+4.48)
E-1101	0	LEVEL 02 SMALL POWER LAYOUT (LOW LEVEL)
E-1104	0	LEVEL 02 SMALL POWER LAYOUT (HIGH LEVEL)

PROJECT: FGB MULTIFUNCTIONAL ARENA

CLIENT: ريم للاستثمار REEM INVESTMENTS

PROJECT MANAGEMENT: IFS INSTITUTE FOR SPORTS/TÄTTEN-BERATUNG GAMM

MAIN CONTRACTOR: Max Bogl Emirates Building Contracting LLC

LEAD CONSULTANT: OBERMEYER MIDDLE EAST GmbH ABU DHABI BRANCH

ARCHITECTURE DESIGN CONSULTANT: architektur concept Pfaffhausen + Staudte

MEP CONSULTANT: clarke samadhin Consulting Engineers

MEP CONTRACTOR: trinity TRINITY ENGINEERING SERVICES LLC MECH-ELECTRICAL & PLUMBING

AS - BUILT

APPROVAL STATUS

Section	Status
A	APPROVED
B	APPROVED AS NOTED
C	RE SUBMIT

TITLE: LEVEL 02 POWER LAYOUT (PART-D)

PROJECT NO.	DATE	DRAWN	CHECKED	SCALE	FORMAT
AD-1010	15.02.2014	SUSHANT	ANANT	1:100	A 1
DRAWING NO.					
MA	TES	AB	PW	2	0
				2	3
				0	0