

NOTE:-

1. ALL DIMENSIONS ARE IN MILLIMETERS UNLESS OTHERWISE SPECIFIED.
2. ALL ELECTRICAL ACCESSORY IN EXTERNAL & WET AREAS ARE W/P AND OTHER AREAS ARE PVC WHITE.
3. ALL SWITCHES/THERMOSTATS NEAR THE DOOR ARE 200mm FROM THE EDGE OF THE WALL.
4. ELECTRICAL INSTALLATION ARE CARRIED OUT AS PER ADD REGULATION EXPANSION COUPLER PROVIDED WHERE EVER CONDUITS CROSSING THE EXPANSION JOINT.
5. ALL FALSE CEILING MOUNTED LIGHT FIXTURES ARE CONNECTED WITH CEILING ROSE USING HEAT RESISTANT WIRE.
7. ALL PVC CONDUIT USED ARE HEAVY DUTY.
8. SEPARATE DRAWING SHALL BE SUBMITTED FOR LANDSCAPE LIGHTING.

LEGEND

SYMBOL	DESCRIPTION	MOUNTING HEIGHT (FFL)
	13A SINGLE SWITCHED SOCKET OUTLET	400mm/1300mm
	13A TWIN SWITCHED SOCKET OUTLET (FEED FROM NON-ESSENTIAL SUPPLY)	400mm
	13A SINGLE SWITCHED SOCKET OUTLET (CLEANER'S USE)	400mm
	13A FUSE SWITCHED OUTLET ABOVE CEILING	ADJACENT TO EQUIPMENT ABOVE FALSE CEILING
	13A FLEX OUTLET ABOVE CEILING	ADJACENT TO EQUIPMENT ABOVE FALSE CEILING
	DOUBLE POLE WALL SWITCH	1300mm
	TRIPLE POLE & NEUTRAL ISOLATOR	1300mm
	SINGLE POLE & NEUTRAL ISOLATOR	1300mm
	INDUSTRIAL SWITCHED SINGLE PHASE SOCKET	ADJACENT TO EQUIPMENT
	INDUSTRIAL SWITCHED THREE PHASE SOCKET	ADJACENT TO EQUIPMENT
	13A UNSWITCHED FUSE CONNECTION UNIT	ADJACENT TO EQUIPMENT
	13A FUSE SWITCHED OUTLET ABOVE CEILING	ADJACENT TO EQUIPMENT ABOVE FALSE CEILING
	HAND DRYER	1300mm
	SHOWER SOCKET	1300mm
	WATER HEATER	ADJACENT TO EQUIPMENT ABOVE FALSE CEILING
	SINGLE OR THREE PHASE DISTRIBUTION BOARD (SURFACE)	1800mm (TOP)
	SUB MAIN DISTRIBUTION BOARD	1800mm (TOP)
	MOTOR CONTROL CENTER	1800mm (TOP)
	LIGHTING CONTROL PANEL	1800mm (TOP)
	3 COMPARTMENT FLOOR OUTLET BOX WITH 1X13A TWIN SOCKET WITH SPACE FOR 4x6 RJ45 OUTLETS	FLOOR MOUNTING
	GI TRUNKING FOR LIGHTING	AS SHOWN ON DRG.
	GI TRUNKING FOR SMALL POWER	AS SHOWN ON DRG.
	GI TRUNKING FOR ELV SYSTEM	AS SHOWN ON DRG.
	POWER CABLE TRAY	AS SHOWN ON DRG.

ABBREVIATIONS

TYP.	TYPICAL	1/A	TO ABOVE
W/P	WEATHER PROOF	T/B	TO BELOW
H/L	HIGH LEVEL	F/A	FROM ABOVE
L/L	LOW LEVEL	F/B	FROM BELOW
B/L	BENCH LEVEL		



CONSULTANT'S DRAWING REFERENCE :-

Drawing No.	Rev.	Drawing Title
AR-1300(ASB)	0	LEVEL 03 KEY PLAN (-6.40)
E-1102	0	LEVEL 03 SMALL POWER LAYOUT (LOW LEVEL)
E-1105	0	LEVEL 03 SMALL POWER LAYOUT (HIGH LEVEL)

DATE **REV.** **BY** **CHKD.** **DATE**

15.02.2014	0	SUSHANT	AS BUILT
------------	---	---------	----------

PROJECT:	FGB MULTIFUNCTIONAL ARENA
CLIENT:	REEM INVESTMENTS
PROJECT MANAGEMENT:	IFS
MAIN CONTRACTOR:	M&E
LEAD CONSULTANT:	OBERMEYER MIDDLE EAST GmbH ABU DHABI BRANCH
ARCHITECTURE DESIGN CONSULTANT:	architektur concept Pfaffhausen + Stoude
MEP CONSULTANT:	darwish
MEP CONTRACTOR:	TRINITY ENGINEERING SERVICES LLC MECH-ELECTRICAL & PLUMBING

AS - BUILT

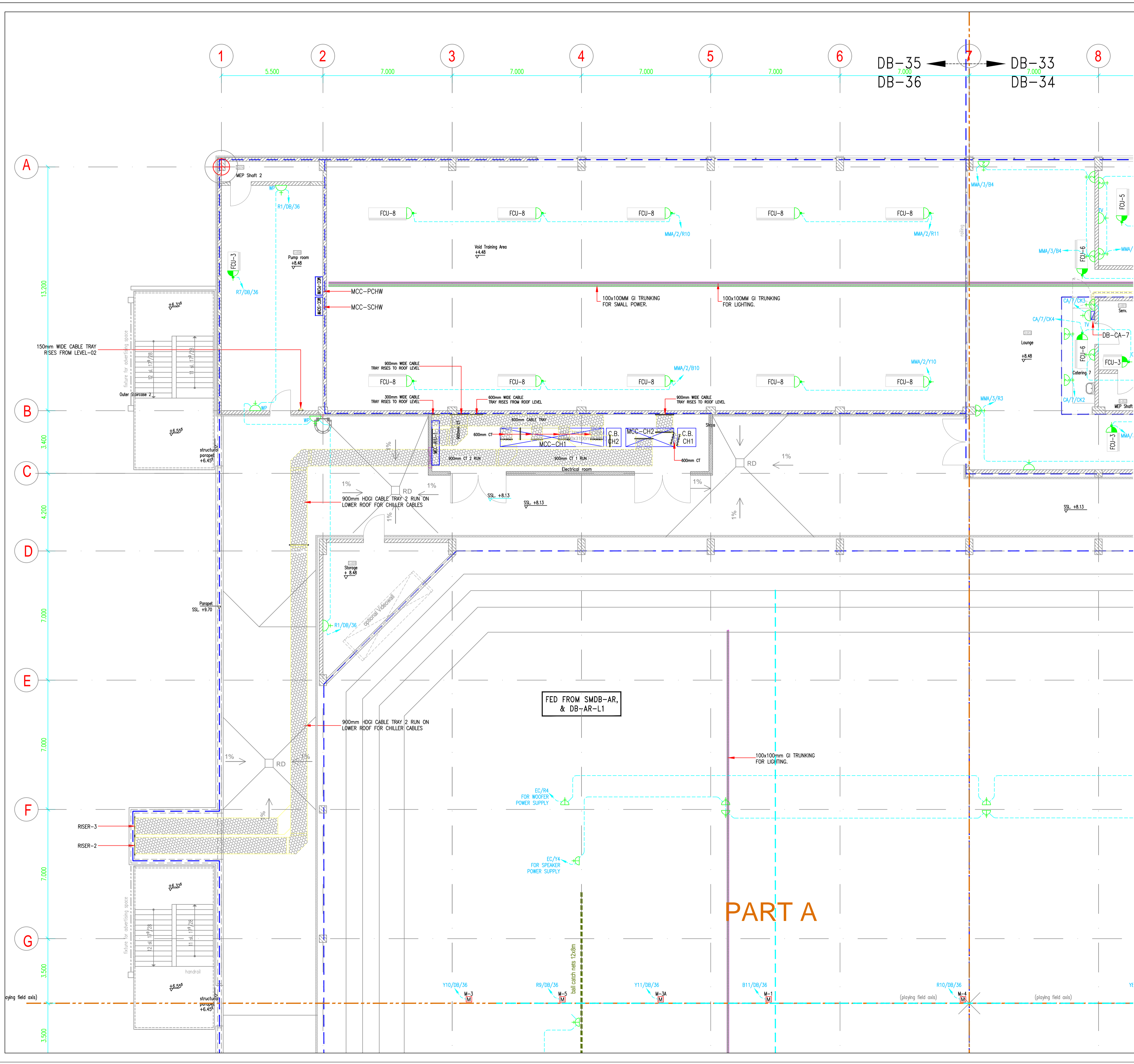
APPROVAL STATUS

A	APPROVED
B	APPROVED AS NOTED
C	RE SUBMIT

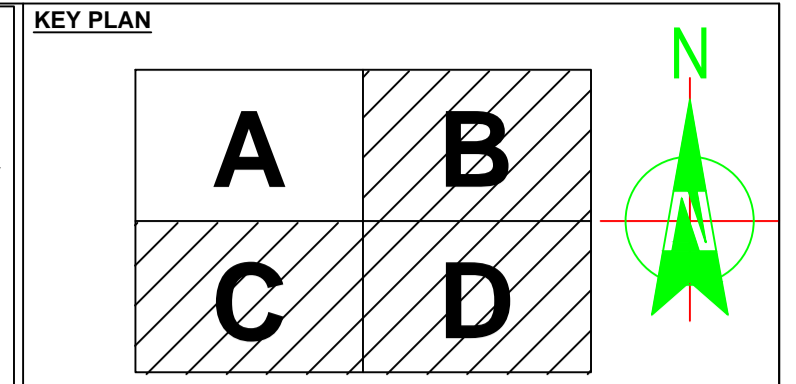
TITLE: **LEVEL 03 POWER LAYOUT (MAIN PLAN)**

PROJECT NO.	DATE	DRAWN	CHECKED	SCALE	FORMAT
AD-1010	15.02.2014	SUSHANT	ANANT	1:200	A 1

DRAWING NO.						REV. NO.			
MA	TES	AB	PW	2	0	2	4	0	0



- NOTE:-**
1. ALL DIMENSIONS ARE IN MILLIMETERS UNLESS OTHERWISE SPECIFIED.
 2. ALL ELECTRICAL ACCESSORY IN EXTERNAL & WET AREAS ARE W/P AND OTHER AREAS ARE PVC WHITE.
 3. ALL SWITCHES/THERMOSTATS NEAR THE DOOR ARE 200mm FROM THE EDGE OF THE WALL.
 4. ELECTRICAL INSTALLATION ARE CARRIED OUT AS PER ADDC REGULATION EXPANSION COUPLER PROVIDED WHERE EVER CONDUITS CROSSING THE EXPANSION JOINT.
 5. ALL FALSE CEILING MOUNTED LIGHT FIXTURES ARE CONNECTED WITH CEILING ROSE USING HEAT RESISTANT WIRE.
 6. ALL PVC CONDUIT USED ARE HEAVY DUTY.
 7. SEPARATE DRAWING SHALL BE SUBMITTED FOR LANDSCAPE LIGHTING.



LEGEND

SYMBOL	DESCRIPTION	MOUNTING HEIGHT (TYP)
[Symbol]	13A SINGLE SWITCHED SOCKET OUTLET	400mm/1300mm
[Symbol]	13A TWIN SWITCHED SOCKET OUTLET (FED FROM NON-ESSENTIAL SUPPLY)	400mm
[Symbol]	13A SINGLE SWITCHED SOCKET OUTLET (CLEANER'S USE)	400mm
[Symbol]	13A FUSE SWITCHED OUTLET ABOVE CEILING	ADJACENT TO EQUIPMENT
[Symbol]	13A FLEX OUTLET ABOVE CEILING	ADJACENT TO EQUIPMENT
[Symbol]	DOUBLE POLE WALL SWITCH	1300mm
[Symbol]	TRIPLE POLE & NEUTRAL ISOLATOR	1300mm
[Symbol]	SINGLE POLE & NEUTRAL ISOLATOR	1300mm
[Symbol]	INDUSTRIAL SWITCHED SINGLE PHASE SOCKET OUTLET	ADJACENT TO EQUIPMENT
[Symbol]	INDUSTRIAL SWITCHED THREE PHASE SOCKET OUTLET	ADJACENT TO EQUIPMENT
[Symbol]	13A UNSWITCHED FUSE CONNECTION UNIT	ADJACENT TO EQUIPMENT
[Symbol]	13A FUSE SWITCHED OUTLET ABOVE CEILING	ADJACENT TO EQUIPMENT
[Symbol]	HAND DRYER	1300mm
[Symbol]	SHOWER SOCKET	1300mm
[Symbol]	WATER HEATER	ABOVE FALSE CEILING
[Symbol]	SINGLE OR THREE PHASE DISTRIBUTION BOARD (SURFACE)	1800mm (TOP)
[Symbol]	SUB MAIN DISTRIBUTION BOARD	1800mm (TOP)
[Symbol]	MOTOR CONTROL CENTER	1800mm (TOP)
[Symbol]	LIGHTING CONTROL PANEL	1800mm (TOP)
[Symbol]	3 COMPARTMENT FLOOR OUTLET BOX WITH 1X13A TWIN SOCKET WITH SPACE FOR 4nos RJ45 OUTLETS	FLOOR MOUNTING
[Symbol]	GI TRUNKING FOR LIGHTING	AS SHOWN ON DRC.
[Symbol]	GI TRUNKING FOR SMALL POWER	AS SHOWN ON DRC.
[Symbol]	GI TRUNKING FOR ELV SYSTEM	AS SHOWN ON DRC.
[Symbol]	POWER CABLE TRAY	AS SHOWN ON DRC.

ABBREVIATIONS

TYP.	TYPICAL	T/A	TO ABOVE
W/P	WEATHER PROOF	T/B	TO BELOW
H/L	HIGH LEVEL	F/A	FROM ABOVE
L/L	LOW LEVEL	F/B	FROM BELOW
B/L	BENCH LEVEL		

CONSULTANT'S DRAWING REFERENCE :-

Drawing No.	Rev.	Drawing Title
AR-1300(ASB)	0	LEVEL 03 KEY PLAN (+8.48)
E-1102	0	LEVEL 03 SMALL POWER LAYOUT (LOW LEVEL)
E-1105	0	LEVEL 03 SMALL POWER LAYOUT (HIGH LEVEL)

DATE REV. DRAWN ISSUE DETAILS

DATE	REV.	DRAWN	ISSUE DETAILS
15.02.2014	0	SUSHANT	AS BUILT

PROJECT: FGB MULTIFUNCTIONAL ARENA

CLIENT: ريم للاستثمار REEM INVESTMENTS

PROJECT MANAGEMENT: IFS INSTITUTE FOR SPORTS/TÄTTEN-BERATUNG GAMBI

MAIN CONTRACTOR: Max Bogl Emirates Building Contracting LLC

LEAD CONSULTANT: OBERMEYER MIDDLE EAST GmbH ABU DHABI BRANCH

ARCHITECTURE DESIGN CONSULTANT: architektur concept Pfaffhausen + Staudte

MEP CONSULTANT: clarke samadhin Consulting Engineers

MEP CONTRACTOR: trinity TRINITY ENGINEERING SERVICES LLC MECH-ELECTRICAL & PLUMBING

AS - BUILT

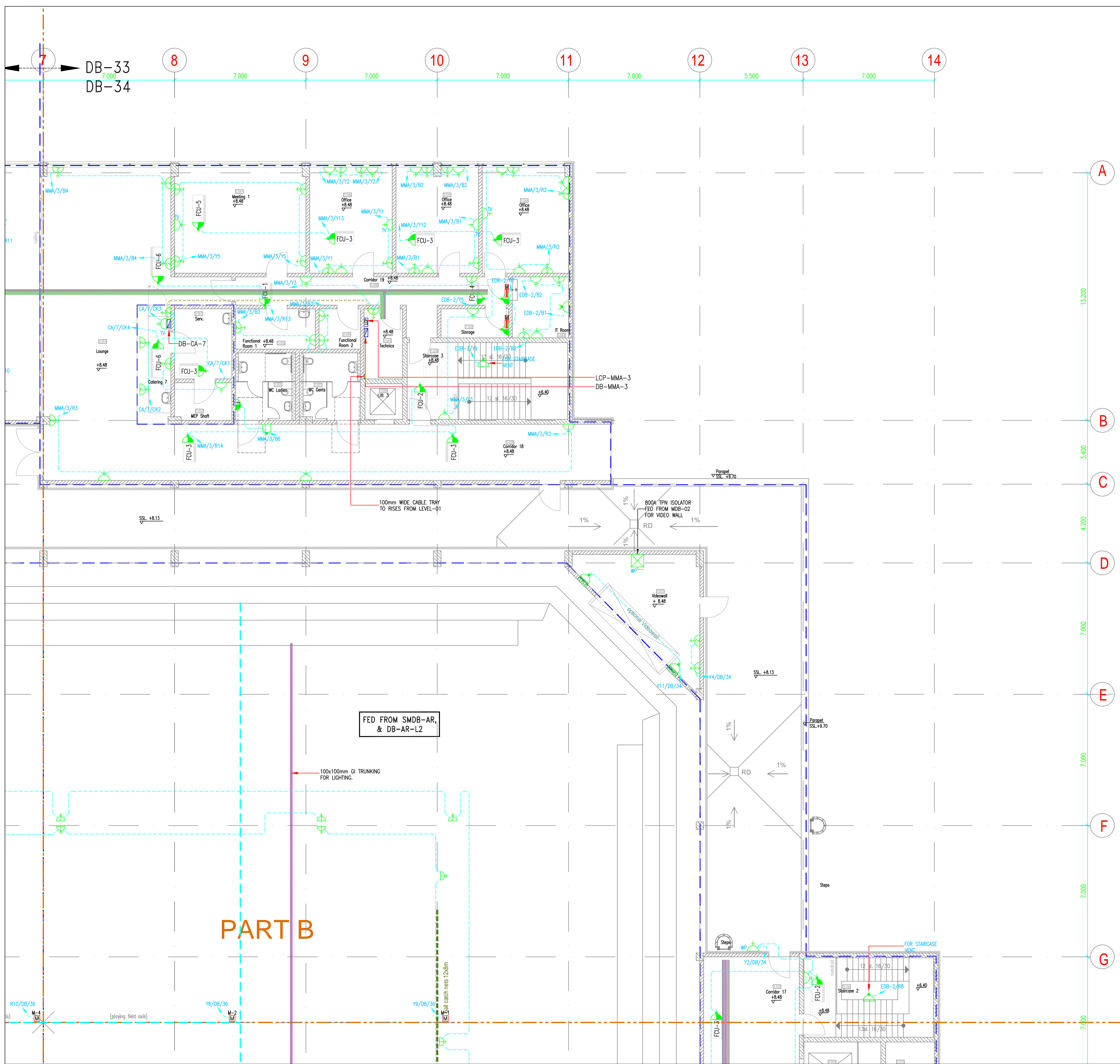
APPROVAL STATUS

Signature	Status
A	APPROVED
B	APPROVED AS NOTED
C	RE SUBMIT

TITLE: LEVEL 03 POWER LAYOUT (PART-A)

PROJECT NO.	DATE	DRAWN	CHECKED	SCALE	FORMAT
AD-1010	15.02.2014	SUSHANT	ANANT	1:100	A 1

DRAWING NO.					REV NO
MA	TES	AB	PW	2 0	2 4 0 0



NOTE:-

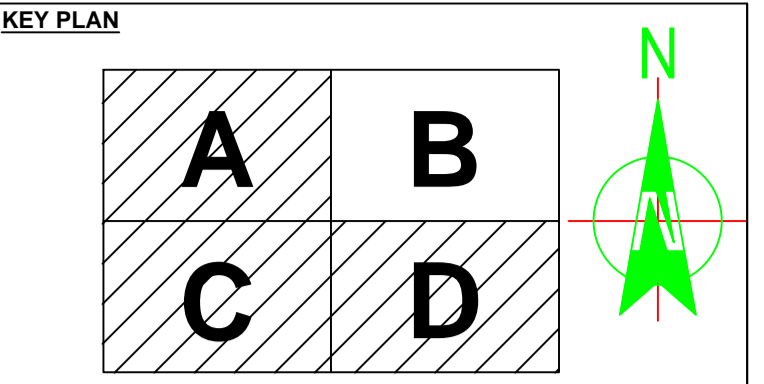
1. ALL DIMENSIONS ARE IN MILLIMETERS UNLESS OTHERWISE SPECIFIED.
2. ALL ELECTRICAL ACCESSORY IN EXTERNAL & WET AREAS ARE W/P AND OTHER AREAS ARE PVC WHITE.
3. ALL SWITCHES/THERMOSTATS NEAR THE DOOR ARE 200mm FROM THE EDGE OF THE WALL.
4. ELECTRICAL INSTALLATION ARE CARRIED OUT AS PER ADDC REGULATION EXPANSION COUPLER PROVIDED WHERE EVER CONDUITS CROSSING THE EXPANSION JOINT.
5. ALL FALSE CEILING MOUNTED LIGHT FIXTURES ARE CONNECTED WITH CEILING ROSE USING HEAT RESISTANT WIRE.
6. ALL PVC CONDUIT USED ARE HEAVY DUTY.
7. SEPARATE DRAWING SHALL BE SUBMITTED FOR LANDSCAPE LIGHTING.

LEGEND

SYMBOL	DESCRIPTION	MOUNTING HEIGHT (FFFL)
[Symbol]	13A SINGLE SWITCHED SOCKET OUTLET	400mm/1300mm
[Symbol]	13A TWIN SWITCHED SOCKET OUTLET (FED FROM NON-ESSENTIAL SUPPLY)	400mm
[Symbol]	13A SINGLE SWITCHED SOCKET OUTLET (CLEANER'S USE)	400mm
[Symbol]	13A FUSE SWITCHED OUTLET ABOVE CEILING.	ADJACENT TO EQUIPMENT
[Symbol]	13A FLEX OUTLET ABOVE CEILING.	ABOVE FALSE CEILING
[Symbol]	DOUBLE POLE WALL SWITCH.	1300mm
[Symbol]	TRIPLE POLE & NEUTRAL ISOLATOR.	1300mm
[Symbol]	SINGLE POLE & NEUTRAL ISOLATOR.	1300mm
[Symbol]	INDUSTRIAL SWITCHED SINGLE PHASE SOCKET OUTLET.	ADJACENT TO EQUIPMENT
[Symbol]	INDUSTRIAL SWITCHED THREE PHASE SOCKET OUTLET.	ADJACENT TO EQUIPMENT
[Symbol]	13A UNSWITCHED FUSE CONNECTION UNIT.	ADJACENT TO EQUIPMENT
[Symbol]	13A FUSE SWITCHED OUTLET ABOVE CEILING	ABOVE FALSE CEILING
[Symbol]	HAND DRYER.	1300mm
[Symbol]	SHOWER SOCKET.	1300mm
[Symbol]	WATER HEATER.	ABOVE FALSE CEILING
[Symbol]	SINGLE OR THREE PHASE DISTRIBUTION BOARD (SURFACE)	1800mm (TOP)
[Symbol]	SUB MAIN DISTRIBUTION DISTRIBUTION BOARD	1800mm (TOP)
[Symbol]	MOTOR CONTROL CENTER	1800mm (TOP)
[Symbol]	LIGHTING CONTROL PANEL	1800mm (TOP)
[Symbol]	3 COMPARTMENT FLOOR OUTLET BOX WITH 1X13A TWIN SOCKET WITH SPACE FOR 4nos RJ45 OUTLETS.	FLOOR MOUNTING
[Symbol]	GI TRUNKING FOR LIGHTING	AS SHOWN ON DRC.
[Symbol]	GI TRUNKING FOR SMALL POWER	AS SHOWN ON DRC.
[Symbol]	GI TRUNKING FOR ELV SYSTEM	AS SHOWN ON DRC.
[Symbol]	POWER CABLE TRAY	AS SHOWN ON DRC.

ABBREVIATIONS

TYP.	TYPICAL	T/A	TO ABOVE
W/P	WEATHER PROOF	T/B	TO BELOW
H/L	HIGH LEVEL	F/A	FROM ABOVE
L/L	LOW LEVEL	F/B	FROM BELOW
B/L	BENCH LEVEL		



CONSULTANT'S DRAWING REFERENCE :-

Drawing No.	Rev.	Drawing Title
AR-1300(ASB)	0	LEVEL 03 KEY PLAN (+8.48)
E-1102	0	LEVEL 03 SMALL POWER LAYOUT (LOW LEVEL)
E-1105	0	LEVEL 03 SMALL POWER LAYOUT (HIGH LEVEL)

DATE REV. DRAWN ISSUE DETAILS

DATE	REV.	DRAWN	ISSUE DETAILS
15.02.2014	0	SUSHANT	AS BUILT

PROJECT: FGB MULTIFUNCTIONAL ARENA

CLIENT: ريم للاستثمار REEM INVESTMENTS

PROJECT MANAGEMENT: IFS INSTITUT FÜR SPORTSTÄTTEN-BERATUNG GMBH

MAIN CONTRACTOR: Max Bögl Emirates Building Contracting LLC

LEAD CONSULTANT: OBERMEYER MIDDLE EAST GmbH ABU DHABI BRANCH

ARCHITECTURE DESIGN CONSULTANT: architektur concept Pfaffhausen + Staudte

MEP CONSULTANT: clarke samadhin Consulting Engineers

MEP CONTRACTOR: trinity TRINITY ENGINEERING SERVICES LLC MECH-ELECTRICAL & PLUMBING

AS - BUILT

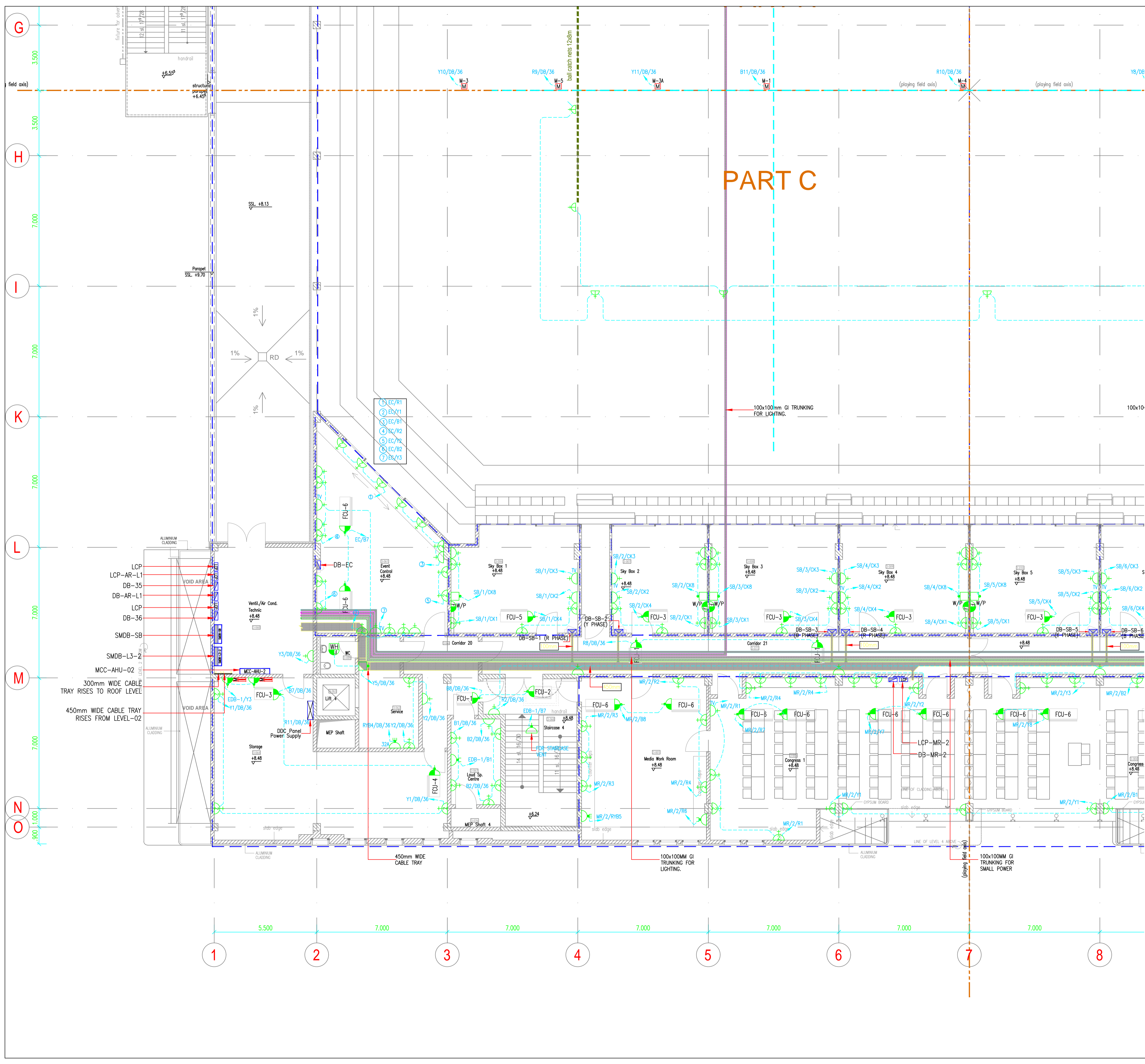
APPROVAL STATUS

Section	Status
A	APPROVED
B	APPROVED AS NOTED
C	RE SUBMIT

TITLE: LEVEL 03 POWER LAYOUT (PART-B)

PROJECT NO.	DATE	DRAWN	CHECKED	SCALE	FORMAT
AD-1010	15.02.2014	SUSHANT	ANANT	1:100	A 1

DRAWING NO.					REV NO
MA	TES	AB	PW	2 0 2 4 0 0	



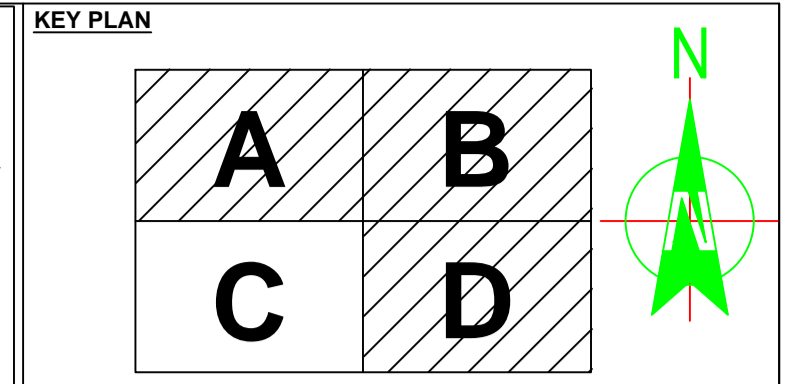
- NOTE:-**
1. ALL DIMENSIONS ARE IN MILLIMETERS UNLESS OTHERWISE SPECIFIED.
 2. ALL ELECTRICAL ACCESSORY IN EXTERNAL & WET AREAS ARE W/P AND OTHER AREAS ARE PVC WHITE.
 3. ALL SWITCHES/THERMOSTATS NEAR THE DOOR ARE 200mm FROM THE EDGE OF THE WALL.
 4. ELECTRICAL INSTALLATION ARE CARRIED OUT AS PER ABOC REGULATION.
 5. EXPANSION COUPLER PROVIDED WHERE EVER CONDUITS CROSSING THE EXPANSION JOINT.
 6. ALL FALSE CEILING MOUNTED LIGHT FIXTURES ARE CONNECTED WITH CEILING ROSE USING HEAT RESISTANT WIRE.
 7. ALL PVC CONDUIT USED ARE HEAVY DUTY.
 8. SEPARATE DRAWING SHALL BE SUBMITTED FOR LANDSCAPE LIGHTING.

LEGEND

SYMBOL	DESCRIPTION	MOUNTING HEIGHT (FFFL)
[Symbol]	13A SINGLE SWITCHED SOCKET OUTLET	400mm/1300mm
[Symbol]	13A TWIN SWITCHED SOCKET OUTLET (FED FROM NON-ESSENTIAL SUPPLY)	400mm
[Symbol]	13A SINGLE SWITCHED SOCKET OUTLET (CLEANER'S USE)	400mm
[Symbol]	13A FUSE SWITCHED OUTLET ABOVE CEILING.	ADJACENT TO EQUIPMENT
[Symbol]	13A FLEX OUTLET ABOVE CEILING.	ABOVE FALSE CEILING
[Symbol]	DOUBLE POLE WALL SWITCH.	1300mm
[Symbol]	TRIPLE POLE & NEUTRAL ISOLATOR.	1300mm
[Symbol]	SINGLE POLE & NEUTRAL ISOLATOR.	1300mm
[Symbol]	INDUSTRIAL SWITCHED SINGLE PHASE SOCKET OUTLET.	ADJACENT TO EQUIPMENT
[Symbol]	INDUSTRIAL SWITCHED THREE PHASE SOCKET OUTLET.	ADJACENT TO EQUIPMENT
[Symbol]	13A UNSWITCHED FUSE CONNECTION UNIT.	ADJACENT TO EQUIPMENT
[Symbol]	13A FUSE SWITCHED OUTLET ABOVE CEILING FALSE CEILING	ADJACENT TO EQUIPMENT
[Symbol]	HAND DRYER.	1300mm
[Symbol]	SHOWER SOCKET.	1300mm
[Symbol]	WATER HEATER.	ABOVE FALSE CEILING
[Symbol]	SINGLE OR THREE PHASE DISTRIBUTION BOARD (SURFACE)	1800mm (TOP)
[Symbol]	SUB MAIN DISTRIBUTION BOARD	1800mm (TOP)
[Symbol]	MOTOR CONTROL CENTER	1800mm (TOP)
[Symbol]	LIGHTING CONTROL PANEL	1800mm (TOP)
[Symbol]	3 COMPARTMENT FLOOR OUTLET BOX WITH 1X13A TWIN SOCKET WITH SPACE FOR 4nos RJ45 OUTLETS.	FLOOR MOUNTING
[Symbol]	GI TRUNKING FOR LIGHTING	AS SHOWN ON DRC.
[Symbol]	GI TRUNKING FOR SMALL POWER	AS SHOWN ON DRC.
[Symbol]	GI TRUNKING FOR ELY SYSTEM	AS SHOWN ON DRC.
[Symbol]	POWER CABLE TRAY	AS SHOWN ON DRC.

ABBREVIATIONS

TYP.	TYPICAL	T/A	TO ABOVE
W/P	WEATHER PROOF	T/B	TO BELOW
H/L	HIGH LEVEL	F/A	FROM ABOVE
L/L	LOW LEVEL	F/B	FROM BELOW
B/L	BENCH LEVEL		



CONSULTANT'S DRAWING REFERENCE :-

Drawing No.	Rev.	Drawing Title
AR-1300(ASB)	0	LEVEL 03 KEY PLAN (+8.48)
E-1102	0	LEVEL 03 SMALL POWER LAYOUT (LOW LEVEL)
E-1105	0	LEVEL 03 SMALL POWER LAYOUT (HIGH LEVEL)

DATE REV. DRAWN ISSUE DETAILS

15.02.2014	0	SUSHANT	AS BUILT
------------	---	---------	----------

PROJECT: FGB MULTIFUNCTIONAL ARENA

CLIENT: REEM INVESTMENTS

PROJECT MANAGEMENT: IFS INSTITUT FÜR SPORTSTÄTTEN-BERATUNG GMBH

MAIN CONTRACTOR: MAX BOGL

LEAD CONSULTANT: OBERMEYER MIDDLE EAST GmbH ABU DHABI BRANCH

ARCHITECTURE DESIGN CONSULTANT: architektur concept Pfaffhausen + Staudte

MEP CONSULTANT: clarke samadhin Consulting Engineers

MEP CONTRACTOR: trinity TRINITY ENGINEERING SERVICES LLC MECH-ELECTRICAL & PLUMBING

AS - BUILT

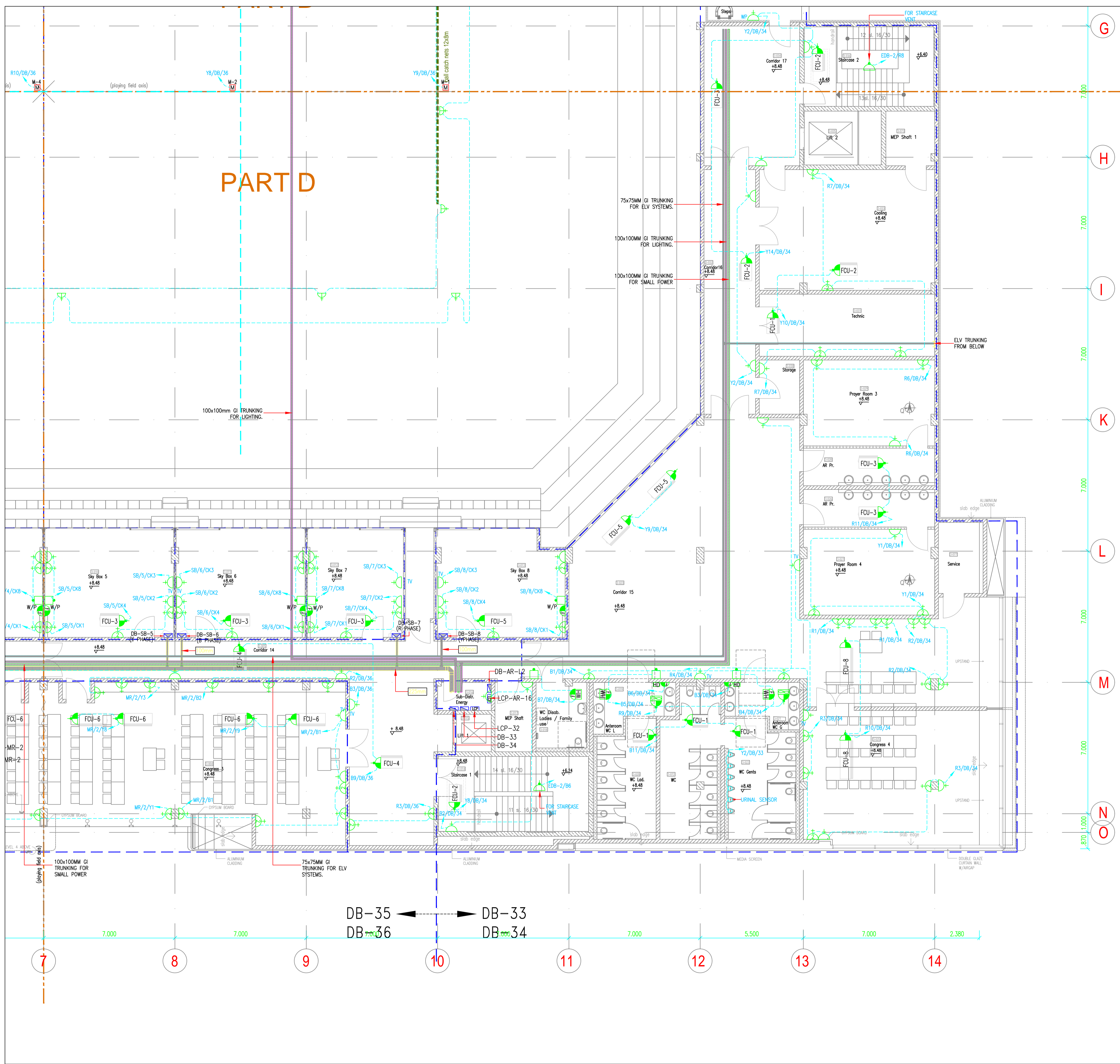
APPROVAL STATUS

A	APPROVED
B	APPROVED AS NOTED
C	RE SUBMIT

TITLE: LEVEL 03 POWER LAYOUT (PART-C)

PROJECT NO.	DATE	DRAWN	CHECKED	SCALE	FORMAT
AD-1010	15.02.2014	SUSHANT	ANANT	1:100	A 1

DRAWING NO.					REV NO
MA	TES	AB	PW	2 0 2 4 0 0	0 0



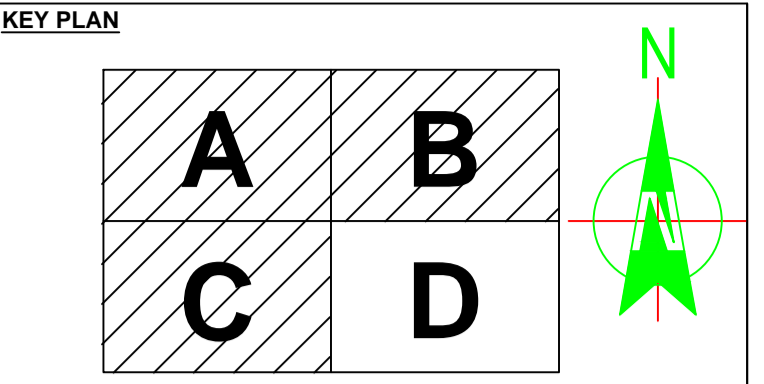
- NOTE:-**
1. ALL DIMENSIONS ARE IN MILLIMETERS UNLESS OTHERWISE SPECIFIED.
 2. ALL ELECTRICAL ACCESSORY IN EXTERNAL & WET AREAS ARE W/P AND OTHER AREAS ARE PVC WHITE.
 3. ALL SWITCHES/THERMOSTATS NEAR THE DOOR ARE 200mm FROM THE EDGE OF THE WALL.
 4. ELECTRICAL INSTALLATION ARE CARRIED OUT AS PER ADDC REGULATION.
 5. EXPANSION COUPLER PROVIDED WHERE EVER CONDUITS CROSSING THE EXPANSION JOINT.
 6. ALL FALSE CEILING MOUNTED LIGHT FIXTURES ARE CONNECTED WITH CEILING ROSE USING HEAT RESISTANT WIRE.
 7. ALL PVC CONDUIT USED ARE HEAVY DUTY.
 8. SEPARATE DRAWING SHALL BE SUBMITTED FOR LANDSCAPE LIGHTING.

LEGEND

SYMBOL	DESCRIPTION	MOUNTING HEIGHT (FFFL)
	13A SINGLE SWITCHED SOCKET OUTLET	400mm/1300mm
	13A TWIN SWITCHED SOCKET OUTLET (FED FROM NON-ESSENTIAL SUPPLY)	400mm
	13A SINGLE SWITCHED SOCKET OUTLET (CLEANER'S USE)	400mm
	13A FUSE SWITCHED OUTLET ABOVE CEILING	ADJACENT TO EQUIPMENT
	13A FLEX OUTLET ABOVE CEILING	ABOVE FALSE CEILING
	DOUBLE POLE WALL SWITCH	1300mm
	TRIPLE POLE & NEUTRAL ISOLATOR	1300mm
	SINGLE POLE & NEUTRAL ISOLATOR	1300mm
	INDUSTRIAL SWITCHED SINGLE PHASE SOCKET	ADJACENT TO EQUIPMENT
	INDUSTRIAL SWITCHED THREE PHASE SOCKET	ADJACENT TO EQUIPMENT
	13A UNSWITCHED FUSE CONNECTION UNIT	ADJACENT TO EQUIPMENT
	13A FUSE SWITCHED OUTLET ABOVE CEILING	ABOVE FALSE CEILING
	HAND DRYER	1300mm
	SHAVES SOCKET	1300mm
	WATER HEATER	ABOVE FALSE CEILING
	SINGLE OR THREE PHASE DISTRIBUTION BOARD (TOP)	1800mm
	SUB MAIN DISTRIBUTION BOARD (TOP)	1800mm
	MOTOR CONTROL CENTER (TOP)	1800mm
	LIGHTING CONTROL PANEL (TOP)	1800mm
	3 COMPARTMENT FLOOR OUTLET BOX WITH 1X13A TWIN SOCKET WITH SPACE FOR 4nos RJ45 OUTLETS	FLOOR MOUNTING
	GI TRUNKING FOR LIGHTING	AS SHOWN ON DRC
	GI TRUNKING FOR SMALL POWER	AS SHOWN ON DRC
	GI TRUNKING FOR ELV SYSTEM	AS SHOWN ON DRC
	POWER CABLE TRAY	AS SHOWN ON DRC

ABBREVIATIONS

TYP.	TYPICAL	T/A	TO ABOVE
W/P	WEATHER PROOF	T/B	TO BELOW
H/L	HIGH LEVEL	F/A	FROM ABOVE
L/L	LOW LEVEL	F/B	FROM BELOW
B/L	BENCH LEVEL		



CONSULTANT'S DRAWING REFERENCE :-

Drawing No.	Rev.	Drawing Title
AR-1300(ASB)	0	LEVEL 03 KEY PLAN (+8.48)
E-1102	0	LEVEL 03 SMALL POWER LAYOUT (LOW LEVEL)
E-1105	0	LEVEL 03 SMALL POWER LAYOUT (HIGH LEVEL)

DATE REV. DRAWN ISSUE DETAILS

15.02.2014	0	SUSANT	AS BUILT
------------	---	--------	----------

PROJECT: FGB MULTIFUNCTIONAL ARENA

CLIENT: ريم للاستثمار REEM INVESTMENTS

PROJECT MANAGEMENT: IFS INSTITUTE FOR SPORTSTÄTTEN-BERATUNG GMBH

MAIN CONTRACTOR: Max Bogl Emirates Building Contracting LLC P.O. Box 12096, Deira, UAE. Fax: +971 4 3844444. P.O. Box 16276, Abu Dhabi, UAE. Fax: +971 2 4661744

LEAD CONSULTANT: OBERMEYER MIDDLE EAST GmbH ABU DHABI BRANCH

ARCHITECTURE DESIGN CONSULTANT: architektur concept Pfaffhausen + Staudte

MEP CONSULTANT: clarke samadhin Consulting Engineers

MEP CONTRACTOR: trinity TRINITY ENGINEERING SERVICES LLC MECH-ELECTRICAL & PLUMBING P. O. BOX 62404, ABU DHABI, U.A.E. TEL. 04 3386070 FAX 04 3386258

AS - BUILT

APPROVAL STATUS

A	APPROVED
B	APPROVED AS NOTED
C	RE SUBMIT

TITLE: LEVEL 03 POWER LAYOUT (PART-D)

PROJECT NO.	DATE	DRAWN	CHECKED	SCALE	FORMAT
AD-1010	15.02.2014	SUSANT	ANANT	1:100	A 1

DRAWING NO.					REV. NO.
MA	TES	AB	PW	2	0
				2	4
				0	0