



فندق  
HOTEL

*inspired luxury*

The 72 Hotel is an iconic Boutique Hotel offering glamorous and ritzy services experience to the leisure and business travelers, the Spacious well appointed Rooms and Suites with its Panoramic view over Khalid Lagoon will always be great memory for our discerned guests.

The 72 Hotel is situated on Al Majaz Waterfront within close proximity to Sharjah well-known landmarks Al Majaz Amphitheater, Al Noor Mosque, Al Noor Island, The Blue Souq, Central Souq and much more.

## ACCOMMODATION

### Superior Rooms

Going a little higher with your level of stay, we provide you with our Superior rooms with 46.5 m<sup>2</sup> of space with an option for a calm city view & 38.5 m<sup>2</sup> size and perfect amenities, with a dash of private city view.

12 12 City View

### Premium Rooms

The variety goes on with our Premium rooms with 50.0 m<sup>2</sup> of space with an extravagant breathtaking lagoon view.

12 Lagoon View

### Junior Suite

Upgrade your stay in one of our gorgeous junior suite sized 55.2 m<sup>2</sup> of space with an option for a calm city view or an extravagant breathtaking lagoon view.

12 11 City View

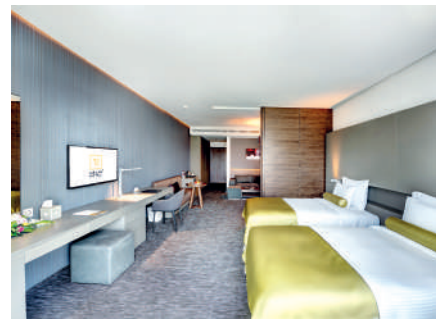
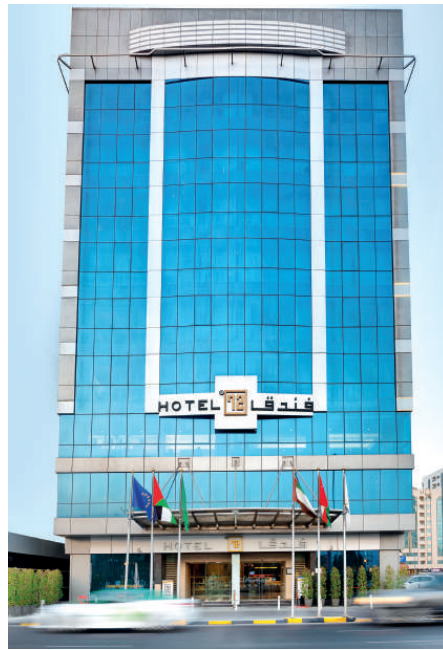
### Family Suite with one bedroom

Enjoy your family vacation with a room specially designed for a home like feel sized 58.8 m<sup>2</sup> of space with an option for a calm city view.

11 Lagoon View

### Family Suite with two bedrooms

Define luxury with one of our Family suites designed with space, comfort and royalty. Our Family suite has a fabulous bedroom overlooking the lagoon with a separate seating room and kitchenette taking up a space of 120 m<sup>2</sup>.



## RESTAURANTS

### Quadrant Café

Refresh your mind, clear your head and kick start your day at Quadrant Café. Located at the hotel lobby, Quadrant Café wants to be the center of your attention so it strives to give you the exquisite pastries and the finest cakes with freshly brewed coffee and relaxing tea.

Opening Hours: 9:00 AM - 9:00 PM.

### Equation Restaurant

Tingling your desire for flavor is what Equation is all about. An all-day dining created with flavor, variety and art to give you the ultimate experience of Arabian and International cuisine served in a buffet style or a la carte.

Service Timings:

Breakfast buffet:	6:30 AM - 10:30 AM
Lunch Timing:	12:30 PM - 3:30 PM
Dinner Timing:	6:30 PM - 11:00 PM
A la Carte:	6:30 AM - 11:00 PM





## HEALTH & RELAXATION

### 72 Spa

72 spa is designed for those craving wellness, calmness, relaxation and uniqueness. We serve ladies and gents separately yet equally pampered.

Opening Hours: 7:00 AM - 10:00 PM

### Ellipse Gym

Our professionally trained staff are always there to help and guide you to the healthy lifestyle you desire serving ladies and gents separately.

Opening Hours: 7:00 AM - 10:00 PM

### Ellipse Indoor Pool

Relax under the shade enjoying a spectacular indoor pool.

Opening Hours: 7:00 AM - 7:00 PM



## BUSINESS & EVENTS

### Business meeting rooms

The 72 hotel presents to you a business solution for all your meetings, giving you FOUR gorgeously designed meeting rooms that can take a capacity up to 200 guests based on the seating style.

We are making sure to add a twist from our hospitality to your meetings and conferences to make them an absolute success. Joining business professionalism and socializing through wellcrafted coffee breaks perfectly situated in a central atrium around your meeting room.

We cater to all your business needs by providing you with state of the art technology, high speed Wi-Fi connection, necessary stationary, wide flat screen, projector, audio visuals and of course the best 5-star hospitality for a memorable experience and a great meeting.



### KIDS AREA

Exquisite playground for the kids to broadened their imagination.



Street 110 Al Majaz 1  
Buhiera Corniche  
Sharjah, UAE  
Phone: +971 6 507 9797  
reservations@hotel72.com  
www.hotel72.com

