

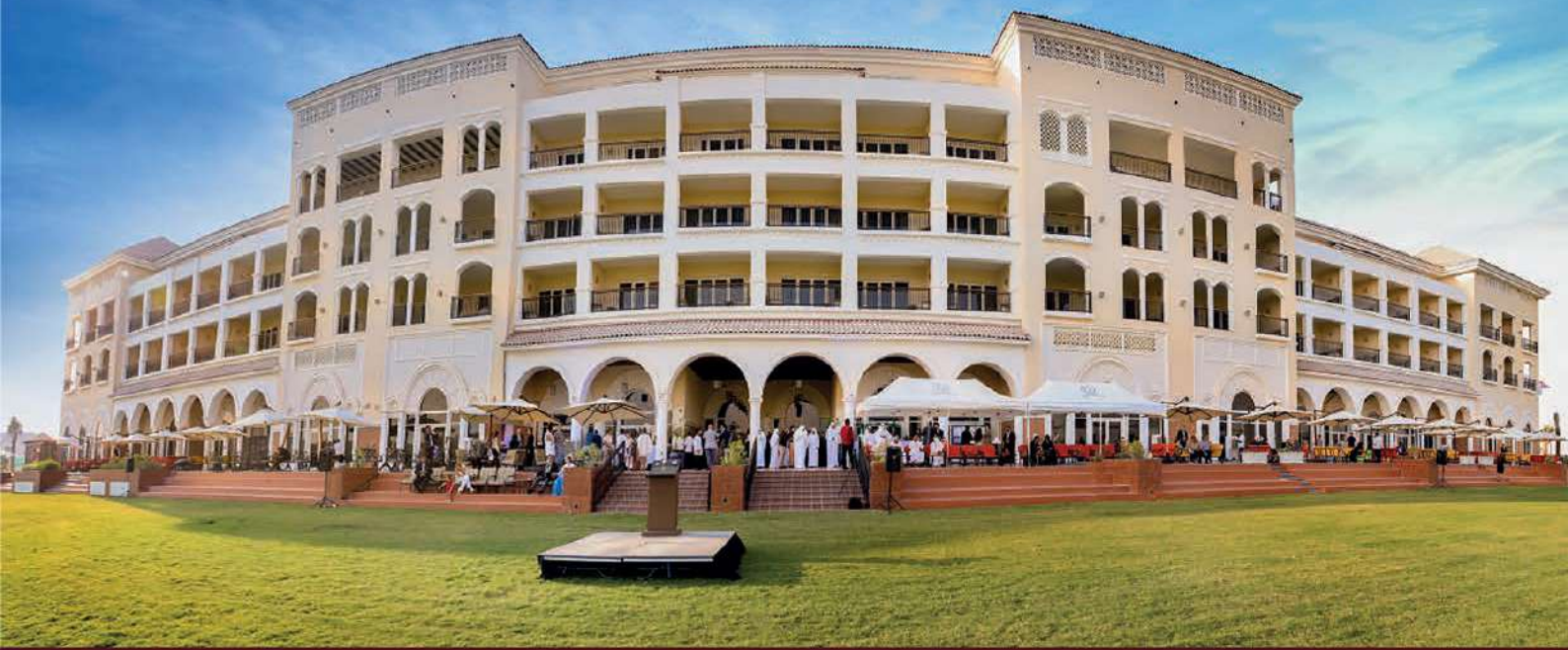


AL HABTOOR
POLO RESORT

ANDALUSIAN SERENITY IN THE HEART OF ARABIA

A tranquil Andalusian inspired, 5 star luxury boutique urban resort awaits in the heart of Dubai and. Expansive green polo lawns lap terracotta terraces, as world class championship polo and stable facilities fulfill the desires of polo players, patrons and equestrians alike.

With an array of beautifully appointed rooms, suits and 4 bedroom private pool villas, state of the art meeting spaces with natural light and wedding event venues, the resort is your ideal escape from the bustle of Dubai's metropolis.

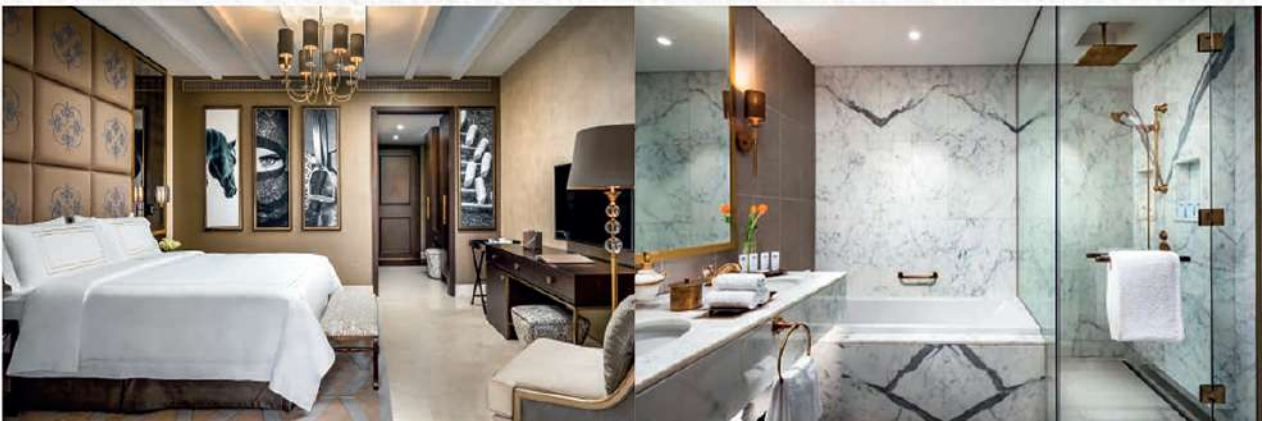


ACCOMMODATION

Deluxe Room

37sqm | 32 Units

Romeo & Juliet balconies overlook the Andalusian inspired courtyard. Rainfall showers, bathtubs and a double bathroom vanity with twin beds provide a luxurious stay.



Deluxe Polo View Room

37sqm | 64 Units

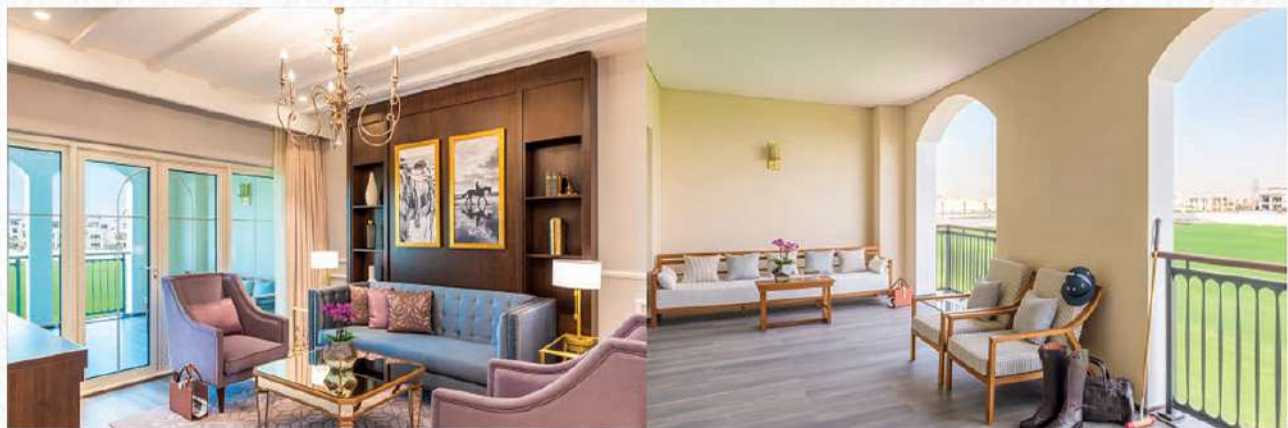
Stunning view across manicured polo lawns from the comfort of your private balcony. Rainfall showers, bathtubs and a double bathroom vanity with twin beds provide a luxurious stay.



Executive Suite

65sqm | 26 Units

Andalusian living extends onto double width private balconies overlooking the Polo lawns. Enter through the polo hallway into a luxurious lounge and dining area with the added convenience of a guest powder room. These well designed luxurious suites feature an en-suite master bedroom with walk through closet to double vanity counters, rainfall showers, and deep bathtubs with luxury bathroom amenities.



The Royal Polo Suite

249sqm

With stunning views of manicured Polo Lawns from your Private Jacuzzi equipped balcony, a contemporary living space awaits you. With two double bedrooms, a large living space and luxurious bathrooms, these penthouse suites offer the ultimate escape.





The Al Habtoor Polo Resort & Club offers

exclusive equestrian facilities, with four world-class polo fields, 520 stables, 36 paddocks, 4 walkers and 3 riding school arenas to meet the expectation of local and international riders.

Our Polo Academy is designed to provide a full spectrum of bespoke services to cater all levels of players for those embarking on their first tournament to the high goal polo players. The annual polo calendar ranges from low, medium and high goal tournaments.

The Polo season runs from October – May. Matches on almost every day during the season.



RECREATIONAL FACILITIES

- ◆ Touch Wellness Centre for a Holistic Spa Experience
- ◆ Fitness Gym with range of Cardiovascular Equipment
- ◆ Swimming pool | Resort Pool with Swim up Bar | Kids Pool | Jacuzzi
- ◆ Tennis Courts
- ◆ Polo Academy
- ◆ Riding School
- ◆ The Arena Club house
- ◆ Golf Driving Range
- ◆ Pilates Studio
- ◆ Stable Tours
- ◆ Stable Management Tours

ISM ACTIVITIES

- ◆ Archery
- ◆ Padel Tennis
- ◆ Kids Football

TEAM BUILDING ACTIVITIES

- ◆ Activities Project Based
- ◆ Activities Sales / Negotiations
- ◆ Activities Leadership | Communications & Team work
- ◆ Activities Sports Based



www.habtoorpoloresort.com

+4444 435 4 971 | info@habtoorpoloresort.com

Wadi Al Safa 5, Emirates Road 611, Dubailand, p.o. Box 112864

Junior Suite

65sqm | 2 Units

A secret and intimate hideaway awaits you in this exclusive suite. Overlooking the 'Roof Garden' for the perfect honeymoon escape, enjoy free standing baths, walk-in wardrobes, oversized bed and a well-appointed living and dining spaces.



Four Bedroom Villa with Polo View

317sqm | 8 Units

With views across the Polo Lawn, these 4 bedroom Royal villas staged over 2 story's provide the ultimate escape for families and friends in landscaped gardens with private temperature Controlled pools, al fresco dining spaces and in-built BBQ pits.

Two master bedrooms with well-appointed en-suite bathrooms complete with rainfall showers, Villeroy and Boch bathtubs as well as double vanity counters make the Royal Villas a perfect choice to escape the modern world.

Four Bedroom Villa with Garden View

462sqm | 3 Units

These 4 bedroom Royal Villas staged over 3 story's with atrium dining spaces, provide the ultimate escape for families and friends. Landscaped gardens with private temperature-controlled pools, al fresco dining spaces and in-built BBQ pits cater to your every need. Two master bedrooms with well-appointed en-suite bathrooms complete with rainfall showers, Villeroy and Boch bathtubs as well as double vanity counters make the Royal Villas a perfect choice to escape the modern world.



DINING AND BARS

The resort comprises 5 sophisticated bars and restaurants designed to suit elite tastes.

- ◆ **Andalucía**
Perfect spot to start the day with a delicious breakfast
- ◆ **Horse & Hound**
Traditional British pub grub
- ◆ **Equestrian Lounge**
Afternoon tea and pastry lounge
- ◆ **Oasis Pool Lounge**
Chilled drinks and menu for poolside cravings
- ◆ **Maswar Courtyard Garden**
Courtyard serving flavored shishas

 ANDALUCIA	Location	Ground floor	
	Operational Hours	7:30AM-11:00AM	
	Concept	Serving International Cuisine/Mediterranean influenced	
	Seating Capacity	Indoor 86	
	Dress Code	Smart Casual	
	Smoking permitted	Terrace Only	
	Children policy	Allowed	
	 EQUESTRIAN LOUNGE	Location	
Operational Hours		8 AM - 8 PM	
Concept		Lobby Lounge	
Seating Capacity		Indoor 89 / Outdoor 246	
Dress Code		Smart Casual	
Smoking permitted		Terrace Only	
Children policy		Allowed	
 MASWAR COURTYARD *GARDEN*		Location	Ground floor
	Operational Hours	1 PM - 1 AM	
	Concept	Shisha Courtyard	
	Seating Capacity	Indoor 56	
	Dress Code	Smart Casual	
	Smoking permitted	Yes	
	Children policy	Not Allowed	
	 OASIS POOL LOUNGE	Location	Back Side of the Resort
Operational Hours		9 AM – 7 PM	
Concept		Pool restaurant	
Seating Capacity		150	
Dress Code		Casual	
Smoking permitted		Yes	
Children policy		Allowed	
 HORSE & HOUND		Location	Ground floor
	Operational Hours	Daily from 12PM –2AM	
	Concept	British Pub	
	Seating Capacity	Indoor 50 / Outdoor 110	
	Dress Code	Smart Casual	
	Smoking permitted	Terrace Only	
	Children policy	Allowed	

CHILDREN'S FACILITIES

- ◆ Kids Pool, Children's Room are located on the ground floor
- ◆ Pony rides

BANQUETING AND MEETING FACILITIES

800sqm of elegantly appointed banquet spaces for gatherings, meetings and events.

Exquisitely designed with Andalusian elements, the resort offers a refined choice of indoor and outdoor venues paired with a dedicated team of professionals that flawlessly orchestrate every detail with grace and style.

WEDDINGS

Celebrate your special day with us in style, with refined choices of both indoor and outdoor venues at this iconic resort.

With a variety of venues from roof - top gardens and lawn - fringed terracotta terraces overlooking championship polo lawns, to the Abjar ballroom with its crystal chandeliers.

From your first visit, allow our team of dedicated specialists to help you bring your dream wedding to life combined with exquisite cuisine to make for the perfect day.





CAPACITY CHART

	Dimensions (Meters)	Total (SQM)	Buffet	Set Dinner	Cocktail	Classroom	Hollow	Cabaret	Boardroom	U-Shape	Theatre
Abjar Ballroom	25.1x14.6x4.2	366	240	200	300	200	120	144	64	72	300
Abjar A	12.5x14.6x4.2	183	120	100	150	100	60	70	30	36	150
Abjar B	12.5x14.6x4.2	183	120	100	150	100	60	70	30	36	150
Abjar Terrace	30 x 12	360	220	200	300	-	-	120	-	-	208
Atrium	50 x 20	100	200	200	300	-	-	-	-	-	300
Atrium Bar (1st floor Polo Bar)	18.5x7.4x2.8	152	70	70	90	-	-	-	-	-	90
Pre-function Area	25.1x11.4x4.4	286	-	-	200	-	-	-	-	-	-
Ballroom Terrace	28x11	-	240	220	300	-	-	-	-	-	300
Appaloosa 1&2	16.2x15x5.2	130	80	80	120	60	40	60	32	32	80
Appaloosa 1	8.1x7.5x2.6	64	40	40	60	30	20	30	16	16	40
Appaloosa 2	8.1x7.5x2.6	66	40	40	60	30	20	30	16	16	40
Appaloosa Terrace	16x3x2.6	-	-	-	30	-	-	-	-	-	-
Appaloosa Hallway	1.7x2.6	-	-	-	-	-	-	-	-	-	-
Appaloosa Bar	-	-	-	-	25	-	-	-	-	-	-
Seville	8.7x7.5x4.2	76	40	40	40	24	-	28	14	20	50
Alcazar	9.4x8.5x4.2	89	50	50	50	36	20	35	16	27	60
Library	8.5x6.2x4.9	52.7	-	-	30	-	-	-	-	-	30
Polo Bar	8.2x6.1x4.9	50	-	-	30	-	-	-	-	-	30
Polo Bar Terrace	28 x 14	392	150	150	300	-	-	-	-	-	-
Polo Bar Terrace 2	20 x 7	140	100	90	140	-	-	-	-	-	-
Andalucia	9.4x8.5x4.2	-	220	200	300	-	-	-	-	-	-
Maswar Courtyard	26x15.5	400	200	200	250	-	-	-	-	-	-
Equestrian Lounge Terrace	30 x 14	420	200	180	250	-	-	-	-	-	250
Oasis Pool Bar	6.6x2.4x2.8	15.8	120	100	150	-	-	-	-	-	150

Since March 2000, Habtoor Polo has been working to build a truly recognized and respected polo organization. The patron of the Habtoor Polo team is Mohammed Al Habtoor, Vice-Chairman and CEO of the Al Habtoor Group. Mohammed Al Habtoor has participated in numerous polo tournaments both locally and globally. He has turned the Dubai Polo Gold Cup Series into one of the highlights of the Dubai sports calendar, making it one of the region's most prestigious polo events.

Origin of Polo

The roots of polo are said to date back over 2,500 years to the 6th century in ancient Persia. But it quickly spread eastwards and eventually caught the attention of the British tea planters in India in the 19th century who put the 'English touch' on the sport and imported it to Britain in 1869. It was then re-exported to America and beyond. Polo is often referred to as "the game of kings," as it was adopted as the most noble of pastimes by kings, princes, shahs, sultans and warriors all over the world. It was Captain John Watson, an Irishman, from the British Cavalry, who created the first known set of rules for playing polo. The so-called 'Hurling ham Rules' were created in 1874 limiting the number of players in a team to five.

Objective

To score goals against the opposing team. Players score by driving a small hard white ball into the opposing team's goal using a long-handled wooden mallet.

The sport of polo is played on a grass field of 300 by 160 yards. Each polo team consists of four riders and their polo ponies. The Al Habtoor Polo legacy was established in 2000 by a man of polo passion; Mohammed Al Habtoor. Since then, the sport of polo has been driven to new heights with Habtoor Polo by its side. In 2012 the Habtoor Polo Team won its first Dubai Polo Gold Cup title, followed by The Dubai Silver Cup in 2013 and the Hildon Cup in 2015.



Key Polo Terms

CHUKKA

A polo match is either 4 or 5 chukkas depending on the match, players and horses available. In a match you either have 3 and 4 players in a team and 1 or 2 umpires. A chukka is 7 minutes, the interval between is 5 minutes. Chukkas is also sometimes used when referring to a practice session.

POLO MALLET

The shaft is usually made from bamboo cane and the head from a hard wood, the wide face of the mallet head is used to strike the ball and not the ends, as in croquet. Polo mallets range in length according, principally, to the height of the pony played, and extend from 48 to 54 inches.

HANDICAP

The players are rated on a scale from minus -2 to 10. Minus -2 indicates a novice player, while a player rated at 10 goals has the highest handicap possible. Handicaps of five goals and above generally belong to professional players.

PATRON

A financially unchallenged amateur player who pays to put a team together, which is usually made up of at least three professionals.

DIVOTS

Turf kicked up by ponies' hooves. Traditionally replaced by the crowd between Chukkas.

UMPIRES

The umpires regulate the game on the polo field.

SAFETY ZONE

The area around the polo field is 10 meters away from the polo field, that is out bounds for spectators during the game.